



The LANTERN

Big Bend Model Railroad Association Volume 9, Number 10 October 2004

NEXT MEETING
October 19, 2004
Myers Park

HO Division Working at Mall

The Ho division has been working at the mall on Tuesday evenings and Saturday morning laying track and laying out a typical community. The different areas, urban, rural and industrial, are being planned as section on various platforms that can be moved as one section. When finished the layout will be easily moved to different shows and displays.

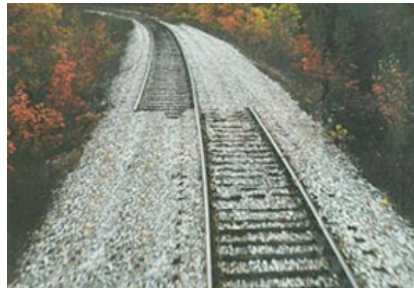
Mall customers have stopped and recognized several of the scratch built structures as local buildings and want to know if the group is modeling Tallahassee. We explain that it is a make believe town but they continue to search for Tallahassee buildings. They study the downtown section for the local businesses and edifices.

The track layout is expanding from an oval

with the additions of sidetracks and spurs

We are talking with the Mall Management about opening for the Christmas season with the HO layout completed, the room cleaned up and the layouts decorated for the season with lights and other spangles.

More later!



Sometime planning can get in the way!

N-Scale to Display at North Florida Fair

The club will have a 20 X 16 foot section in the center aisle of building four. Building Four is usually the Four H display center.

The N-scale Division is going to place a J or U

shaped setup in the limited space. The BBMRA now has enough modules to display layouts from 8X4 feet to a layout large enough to fill an entire room with multiple loops and sections.

The BBMRA logo is also shown on the fair website at www.northfloridafair.com under entertainment.

NEXT MEETING

**October 19th at the
Community Room of
Myers Park at 7:30 p.m.
for sure.**

**Program:
Model Contest
Weathering discussion**

BBMRA Present at Leeds Company Dinner for Their Customers

The BBMRA set up a small N-scale layout at the annual Leeds Company dinner. The layout consisted of a

loop with two inside spurs and a partially elevated figure eight in the center as two separate mainlines. One of the spurs went to a lumber mill identified as Great Southern Pine while the other spur ended at a retail lumberyard.

The children, ages four to forty, were taught to run the trains from the two transformers. They would back the train of flatbed and condola onto

one of the spurs to load the train with the stacks of lumber and barrels. Then they pulled the trains forward, around the loop twice and backed onto the other spur to unload the train. The children soon divided the play into three roles. The engineer who ran the train from the transformers, the conductor who gave the engineer orders when to start and stop, through the switches and told the

local industry personnel when to load. The local people loaded and unloaded the train and became the third role. The children were all very good about waiting in line and moving through the roles to get to engineer.

A good time was had by the young and old.



We just like old steam engines