



# THE Lantern

April 2014

Volume 19 Number 4

## April 15<sup>th</sup> Program: "Run Trains!"

The program for the April 15<sup>th</sup> meeting is "running trains." The HO, the Large Scale and the Small Scale Divisions will set-up and run their T-Trak modular layouts.

If you have a module that's ready-to-run (meaning the track is glued down) then please bring it. Scenery can be added at a later date.

There will be a short business meeting: accepting the minutes and the treasurer's report and a few announcements and then we'll be back to running trains.

This will be the Large Scale Division's first public showing of their T-Trak modules so be sure to come out and support their efforts.

Remember this is a club event, you don't have to own a module to run your trains so be sure to bring your trains!

## It's time for a change: rolling storage vs. static storage

Submitted by John Sullenberger

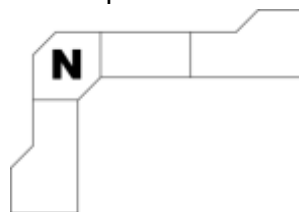
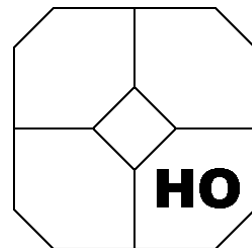
Each and every month the BBMRA pays \$115.03 to the Storage Center 2 for our storage unit. This monthly payment adds up to \$1,380.36 per year. It's a double length storage unit with roll-up doors on both ends for easy access and it keeps our "stuff" dry. The problem is that all we use it for is to store "stuff" we haven't used in years and most likely will not use again.

During the past couple of years there have been conversations and discussions about clearing out the storage unit (getting rid of our stuff by either by giving it away or throwing it away) and relinquishing our lease at the Storage Center. I believe it's time to do just that.

During a quick inventory on Monday, April 7, 2014 I found a chair, 12 boxes of magazines, 4 storage racks, boxes of junk and two modular layouts: an HO layout made up of four 3 by 3 foot modules (from the Miracle Strip purchase some years ago) plus four 6" separation modules (these were built to make the set-up of these corners easier) and four N Scale modules that can be put together into either a 9 by 9 foot or a 13 by 9 foot layout (shown).

Therefore on May 3<sup>rd</sup> I want to hold a giveaway at the storage unit. By the end of the day whatever we don't give away (this includes the layouts) we'll throw away in the on-site dumpsters. We'll sweep the storage unit and notify the management that we are relinquishing our lease.

This brings us to the rolling storage: members of the board are discussing the possibility of buying an enclosed trailer to store and to haul our layouts to set ups (our show, Home Depot, Lowe's, the Junior Museum, the R.A. Grey building, etc.). The interior of the trailer would be set up to handle modules from all of the divisions.



## TALLAHASSEE MODEL RAILROAD SHOW & SALE

Saturday, June 28<sup>th</sup>, 2014 – North Florida Fairgrounds, Buildings 2 & 4 – 9 am to 4 pm  
Adults & Children 13 and older: \$6 – Children 12 and younger are free – Free Parking



The trailer is 7 feet wide by 14 feet long and rides on a single axle and is slightly used. The cost of the trailer would be between \$2000 and \$2500. As I can do the math, I realize that the initial cost of the trailer is just about equal to two years of our storage unit payments and would have to be paid up front. However, I believe that in the long run the trailer would be more cost effective as a smaller storage option and as a hauler for our layouts.

We'll discuss this at the April 15<sup>th</sup> meeting. If you have any questions or comments please feel free to either call me at 850-544-1870 or e-mail me at [sullyjws@aol.com](mailto:sullyjws@aol.com).

## **NEW WAY** by Mike Sassard

I live in a regular two bedroom apartment. Three years ago my wife died, meaning I had the whole apartment to myself. I had Goodwill take ALL the unused furniture. This left me an unusual amount of SPACE. In rebuilding my layout, I have actually built FIVE layouts in this apartment and I am very pleased with them ALL.

I did two things differently. First, instead of model railroad scenery I went to Michael's craft store and Jo Ann's craft store and bought A LOT of anything I thought I could use. All five layouts are scened with this material, with one exception, the garden with items from Scenic Express. Second, I wanted all

possible buildings lighted, but I didn't want to use puny transformer power, which I did use on the elevated loop to light the big station. I used 120 volt regular house current, with LED bulbs and a few Night light bulbs.

I am overcome with joy at the outcome in both respects.

The first layout is in the spare bedroom and is plywood on plastic sawhorses. The second is a 4 by 8 in the living room. The third is a "G" gauge loop around the second layout on the floor and finally when I thought there



was no more space, I put in an elevated loop 6½ feet from the floor in the living room. To operate and view it, I bought a small metal scaffold and a good folding ladder to work on it. Yet, it occurred to me that I could put an elevated layout over my first layout in the spare bedroom, which I did. This one is lower and can be viewed from the floor. There are two independent track loops on this one. They are ALL COMPLETE.



# 2014 Tallahassee Model Railroad Show & Sale Update

Submitted by John Sullenberger, Train Show Manager

Currently, we have 26 vendors who have reserved 129 tables and we are sold out. Set-Up on Friday, June 27<sup>th</sup> will begin at 10 am and run to 7 pm (or there-a-bouts) and Saturday set-up will be from 7 am to 9 am.

I need a volunteer coordinator to fill the set-up/tear-down crews and the ticket booth crew. Anyone interested? Also, I need volunteers to man the set-up crew, the tear-down crew and the ticket booth crew. Is anyone willing to help?

As in years past we will need to borrow some extension cords as will be 7 or 8 ceiling drops. There will be masking tape and a pen to mark you cord. I'll make every effort to get the cord back to you within a couple of weeks of the show.

Please let me know if you need me to create and print you a name badge.

## Can you wire a layout?

A former BBMRA member, Debbie Page needs some help with wiring a layout. She and her mother have built a ceiling HO loop and have installed the track and the buildings. They need help with wiring the track and the buildings for lights. If you can help Debbie can be contacted at 245-6131 (her work number) during the day.

## BBMRA Meeting Minutes for March 18<sup>th</sup>, 2014

President John Sullenberger called the meeting to order at 7:44 P.M.

Meeting minutes of Feb 18<sup>th</sup>, 2014 accepted as is.

Treasurer report; Sandy reports, we are in the black. Accepted by the members.

John introduced our program presentation person, Bill Metzler.

Bill explained how he began the journey around railroading leading to making maps for numerous magazines. He showed how the maps had began in the early days to the newest methods of making them.

We all thank Bill for sharing his vast knowledge of how these come about. Don't take "no for an answer".

John called the meeting back to order for a short continuation of the business meeting.

Small scale; Garth E. thanked all who helped with the Crafters Market day.

HO; Art W. reports HO people "run and gun" the next meeting to run T-track modules getting ready for the show.

Large scale; Doug G. reports the "O" scale modules are being worked on and plan to be running next meeting.

Good of the group, Dave B. has new DVD's of 2013 events, we need the Blue ray player to get the best of these.

John asks if anyone can help with setting up an HO layout, please contact him.

Show tables are being sold, and we will need volunteers as in the past to make this a great show.

Next meeting April 15<sup>th</sup>, 2014 "run trains", short business meeting.

Meeting ended at 9:09 P.M.

Respectfully submitted by Doug Gyuricsko.