



THE Lantern

August 2022

Volume 27 Number 08

HEADLINES

- [August BBMRA Meeting via Zoom](#)
- [BBMRA Officer Elections](#)
- [Colorado Railroad Presentation – B. Donner](#)
- [Don Adams & Ed Dellascio](#)
- [Membership Dues](#)
- [Upcoming Events](#)
- [Brightline Rail Service](#)
- [Lloyd Depot Open House](#)
- [Billboard Reefers – Ralston-Purina](#)
- [More Articles and Minutes](#)

[August 19, 7:30 p.m. BBMRA Meeting, Elections, Planning for the Coming Year](#)



BBMRA meets Tuesday, August 19, at 7:30 p.m. through Zoom. Club officers will be elected for the 2022/23 year, and we will have a club-wide discussion of major activities, including possible new initiatives.

Club Meetings are Zoom Only

Join Zoom Meeting

<https://us02web.zoom.us/j/87359055848?pwd=WTVtUDhBUmhXVFp3RkY4WWNnZ2NXdz09>

BBMRA Zoom: Go to Zoom Program or Internet site and use these codes.

Meeting ID: [873 5905 5848](#), Password: [BBMRA2022](#)

2022/23 Elections are Tuesday, August 16

It's time to elect BBMRA officers for another year and almost everyone will be running for another term, including long-time BBMRA President Andy Zimmerman. The Small-Scale Division, sadly, will be electing a successor to Garth Easton, who passed away late last year.

The president, vice president, treasurer and secretary will be elected by all participating BBMRA members during the Zoom meeting Tuesday, August 19. The Large Scale, Small Scale and HO Division members will elect their coordinators, completing the BBMRA Board.

The 2022/23 slate of officers was announced during the July 16 Zoom meeting to comply with the one-month notice requirement in the club's by-laws.

This year's slate consists of the Following:

- **President** - Andy J. Zimmerman
- **Vice President** - Stacey Elliott

- **Treasurer** - Neal Meadows
- **Secretary** - Sheldon Harrison
- **Large-Scale** - Sam Miller
- **HO-Division** - Phil Weston
- **Small-Scale** – To be announced later.

Any club member can run for an office and nominations will be taken from the floor during the August 19 meeting.

Andy Zimmerman was club vice president and succeeded John Sullenberger following John’s death almost 10 years ago.

Colorado Railroad Presentation

Come on out on August 31st and join BBMRA member Barbara Donner as she talks on her recent trip to Colorado to tour the Rockies and ride on six historic railroads. Her tour also included the Colorado Railroad Museum. This event begins at 5 p.m. in the Lake Jackson Community Center, 3840 North Monroe Street, at the intersection with Fred George Road. Socialization will be from 5 to 6, with the presentation following at 6 p.m.

Barbara rode on the Durango & Silverton, Pike’s Peak cog railroad, Georgetown Loop, Royal Gorge and two other historic lines.

Dan Adams & Ed Dellascio

From Sam Miller:

Two veteran model railroaders from Alabama with ties to BBMRA passed away recently – Dan Adams of Headman, AL, and Ed Dellascio from Opelika.

Dan was a founder and chief organizer of the Wiregrass Model Train Show in Dothan. When BBMRA members got their free admission under a reciprocal agreement between our club and the Dothan club, he almost certainly was the grinning, welcoming guy at the front. Dan passed away early this summer. He was in his early 80’s. In addition to heading up the Dothan train show, he was a talented N Scale modeler.

Ed was a regular at the Dothan and Tallahassee train shows, as well as other shows throughout Alabama. He operated under Ed’s Boxcar. He passed away on July 28. He was 80, born in 1942, and had been in model railroading for almost 50 years. Ed and his partner, Steve Ward from Columbus, GA, had tables at our June 25-26 show near the O Gauge T-Trak layout. Ed was getting around in a motorized wheelchair.

Ed and Dan were fine gentlemen and great representative of our model train hobby.



BBMRA Important Events in 2022!!

Help us build this calendar. Email sammiller61113@outlook.com. Please confirm that an activity is still on before you travel to it. We are listing Internet links whenever possible.

Here is a terrific national calendar: https://www.railserv.com/events/train_shows.html

BBMRA meetings are the third Tuesday of each month. We have resumed meeting through Zoom only because of the COVID resurgence.

BBMRA Zoom: Go to Zoom Program or Internet site and use these codes.

Meeting ID: 873 5905 5848, Password: BBMRA2022

Lionel Interest Group Operating Sessions: each Sunday at 1:30 p.m. at Sam Miller's house in Woodgate. Call (850) 459-3012 for further information.

September 17-18, 2022: Wiregrass Annual Model Railroad Show & Sale, National Peanut Festival and Fairgrounds, Dothan, AL. Saturday, 9am-5pm, Sunday, 10am-4pm. (These are Central times.)

September 17-18, 2022: The Villages Model Train Show & Sale, Savannah Regional Center, 1545 Buena Vista Blvd., The Villages, FL, 32162. Saturday, 9am-4pm, Sunday, 10am-3pm. Admission, \$7, children under 12, free.

<http://thevillagesmodeltrainclub.com/>

November 19-20, 2022, Pensacola Railfest Model Train Show & Sale, Pensacola Interstate Fairgrounds, Building 1, 6655 Mobile Highway, Pensacola, 32526. This is a new date. In the past, this show has been on the first weekend in December.

Pay Your 2022-23 Dues by PayPal

The BBMRA now has the option for new and current members to pay their dues online by using the PayPal link on the BBMRA.ORG website. It is under the Membership menu item. When you select the

PayPal button you will get the option to use your PayPal account if you have one or use a credit/debit card. The dues are \$21 using this method.



BBMRA dues are \$20 a year and were due July 30, under club bylaws. Over the years, however, we have not considered dues delinquent until the end of August, BBMRA President Andy Zimmerman says.

Brightline Brings High-Speed Train Travel to America, Starting in Florida

From AFAR, July 22, 2022, AFAR describes itself as "the world's leading travel media brand that inspires and guides travelers to have deeper, richer, and more meaningful experiences."



By Paul Rubio (Sent to us by Ed Schroeder)

By early 2023, the journey between Miami and Orlando should get a whole lot easier. Unbearable traffic, pricey refuels, road rage, and steep carbon footprints will be things of the past as Florida enters an age of high-speed train travel.

This welcomed change comes courtesy of [Brightline](#), an ecofriendly, high-speed train company scheduled to commence service between Miami and Orlando early next year. It's the latest plot point in a series of game-changing transportation improvements transforming the state.

Brightline has been changing how people live, work, and play in south Florida since it launched its first high-speed train service in 2018 between Fort Lauderdale and West Palm Beach. Soon after, it expanded to downtown Miami. Anchored by glass-encased futuristic stations (with fab work pods and watering holes), the privately funded, multi-billion-dollar rail service currently whisks passengers at 79 mph between these key cities on tricked-out trains (that run on clean biodiesel fuel), providing friendly, top-notch service all along the way (a rarity in travel these days).

Here, all you need to know about the state’s high-speed rail service—present and future—and why you’ll want to ditch the car on your next trip to Florida.

Current Brightline destinations

Brightline currently operates between three major metropolises—Miami, Fort Lauderdale, and West Palm Beach—with service almost hourly from early morning to late night. The trip clocks in under 30 minutes between Miami and Fort Lauderdale and another 35 between Fort Lauderdale and Palm Beach, less than half the typical travel time by car (during rush hour).

While the trains take passengers from one downtown to the next, Brightline also offers door-to-door service through Brightline+, a Brightline-branded fleet of electric cars. When booking a train, riders have the option of booking an electric vehicle to pick them up or drop them off anywhere within a five-mile radius of the station. (At press time, this service is complimentary—and is also working out some kinks.)

How much do Brightline tickets cost?

Before purchasing a ticket on the Brightline app or website, you’ll need to first choose between two classes of service: “Smart” and “Premium.” Both promise comfy seats, free Wi-Fi, and the greater Brightline train experience. However, Premium means seating in Coach 1, where complimentary snacks and beverages (including alcoholic) are provided along with slightly roomier seats. It also grants access to the predeparture lounges at train stations, where bites and tipples are also available.



Tickets in Smart begin at \$10 for the journey between Miami and Fort Lauderdale, \$27 in Premium. For Miami to West Palm Beach, fares start at \$15 in Smart and \$37 in Premium. Put in perspective, a rideshare typically costs \$50–\$75 from Miami to Fort Lauderdale and over \$100 between Miami and West Palm Beach.

Note that Brightline also runs plenty of promos at any given time, most of which can be found on its website. For example, this South Florida–based writer is currently enjoying an unlimited monthly pass for \$199 to commute between Fort Lauderdale and Miami.



The Brightline experience

The three Brightline stations currently in operation bear similar modern aesthetics, underscored by wide reception halls, cantilevered spaces above the tracks, geometric furnishings, and floor-to-ceiling windows. They’re solar-powered and rife with ecofriendly design elements like the highest tech Dyson hand dryers in the restrooms and water refill stations.

Riders are encouraged to arrive 15 minutes before scheduled departure,

but boarding doesn't close until 5 minutes prior. There are check-in counters upon entering for those who need to drop large suitcases, but most will skip this area and go directly upstairs to security screening. It typically takes a minute to self-scan your ticket from the app and get your smaller carry-on bags screened.

Once through, the predeparture area consists of stylish seating areas and work pods aplenty, with no shortage of plugs or USB chargers. There's a sit-down bar in every train station, which serves breakfast, lunch, and dinner (and some pretty awesome cocktails) plus a grab-and-go market that's fully autonomous (think: a minibar that automatically charges when you touch things but on a much larger scale). There's also a predeparture lounge for those who splurge on Premium class.

Once boarding is announced and the train approaches the track, you'll notice Brightline's signature yellow exterior. Inside, the colors skew neutral and the cars spacious. Interior aisles measure an ample 32 inches, making it easy to maneuver rolling suitcases, strollers, and even wheelchairs. The train seats look and feel like premium economy airline seats; there's plenty of legroom and elbow room plus an in-seat recline that slides forward instead of landing on the lap of the passenger behind. Each seat also features two USB ports and two outlets, so you can charge all your electronics at once.

On board, Brightline's Wi-Fi exists at lightning-fast speed, strong enough for streaming and video calls. The network is the same across all stations and trains, avoiding connectivity interruptions.

During the journey in Smart class, attendants stroll through the aisles with food and beverage for purchase. In Premium, riders receive one snack and two drinks of their choice from the roving cart. When the cart does pass by, don't be surprised if an attendant chats with you. Much like all the people working for Brightline that I've met, the on-board attendants are affable and customer-service oriented. This extends to the security screeners, baggage handlers, bar staff—you name it. Such an elevated hospitality-driven experience is refreshing, especially when service levels at hotels, restaurants, and on airlines seem to be hitting all-time lows.

The future of Brightline



Construction is underway for an Aventura station (between Miami and Fort Lauderdale) as well as a Boca Raton station (between Fort Lauderdale and West Palm Beach), both set to debut by December 2022. Additionally, tracks connecting West Palm Beach and Orlando are nearing completion. The station, which will be located at Orlando International Airport, should start welcoming passengers in early 2023. Once these three destinations are in service, Brightline will head to Tampa, Florida, soon after, while also embarking on a West Coast equivalent: an express train connecting Southern California and Las Vegas in just a three-hour ride. Construction is expected to begin in 2023.

For now, Brightline is actively transforming the way people live and vacation across south Florida. The high-speed, state-of-the-art trains are changing the face of local and regional travel, with the best yet to come

Lloyd Depot Open House Lots of Fun and Popular

From Randy Lombardo:

Randy Lombardo, Sal Martocci, Sam Miller and Ed Schroeder attended the annual open house of the Historic Lloyd Depot on Saturday, July 2.

Several treasures were on display including:

- A 1920s pushcart that was used to haul baggage, mail, and other supplies for the station.
- An Arrival/Departure Board rescued from the former Tallahassee Amtrak Waiting Room and refurbished by Tony Zampino, a BBMRA member (Tony Zampino).
- An operating G-Scale Layout, where kids had the opportunity to place simulated baggage (plastic mold) in one of the coaches.
- HO-Scale Replica Atlantic Coastline (ACL), Louisville & Nashville (L & N), Seaboard Air Line (SAL) and Seaboard Coastline (SCL) passenger equipment; and
- A Gold Framed picture of Seaboard System Electromotive Division of General Motors (EMD) F7 #116 (ex-Clinchfield (CRR) #800, originally built as F3 in 1948, upgraded in 1952).



Meanwhile outside, "Chef" Dan McDaniel, Vice-President of Gulf Wind Chapter, National Railway Historical Society (sponsor of the event) and a BBMRA member, grilled and served over 50 Nathan's Famous Hot dogs to hungry visitors (and dogs) who dined and mingled together under the green leafy trees to escape summer's heat (glad the rain refrained). Drew Hackmeyer, another BBMRA member as well as Dan's colleague in the Gulf Winds NRHS, and his wife, Michelle, kept several coolers stocked with cold drinks and cold water.

Jefferson County Sheriff Alfred Kenneth made a guest appearance (though I never had the opportunity to meet him).

While snapping some photos, I observed part of a semaphore that stood near the roof used to signal trains to stop or proceed through the station. I also peeked in the former Ticket Agent's Office, now occupied by the U.S. Postal Service (USPS) with mailboxes, including a Blue Giant at the entrance. I recall catching a glimpse of Lloyd's Station riding Amtrak's Eastbound "Sunset Limited" in February 1999. I was last in Jefferson County helping operate an O-Gauge Layout at the old library in nearby Monticello, prior to our show in 2002.

(From Sam Miller: Ed Schroeder, enjoying the open house with wife, Mary Beth, recounted how he and Dave Kerns, a passed former member of our club, drafted the papers implementing the Historical Society's lease of the Lloyd Depot many years ago.)

Timetables of the Past

Timetables of the Past.... Seaboard Airline Timetable from April 24, 1966, PASSENGER, MAIL & EXPRESS (from eBay)

WESTBOUND (PM)	EASTBOUND (PM)
SAL 10-37	SAL 38-57
L & N 62-33	L & N 34-61
1 25	2 35

(146.9 MILES FROM JACKSONVILLE)

Later that year, the station was closed when SAL canceled the passenger, mail, and express service.

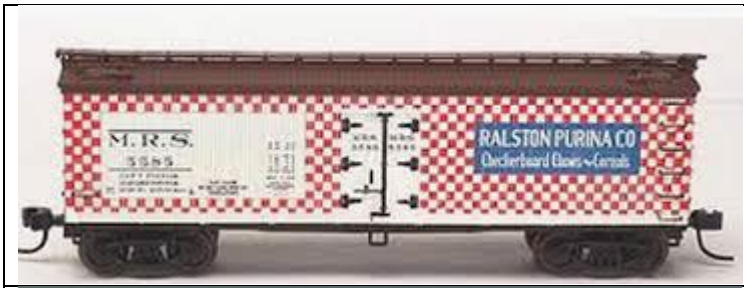



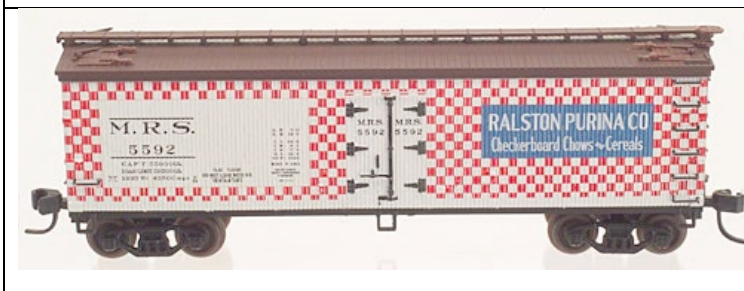
The "Gulf Wind" never stopped at Lloyd but did stop in Tallahassee, in addition to passenger, mail and express service.



BILLBOARD REEFERS OUT OF THE PAST

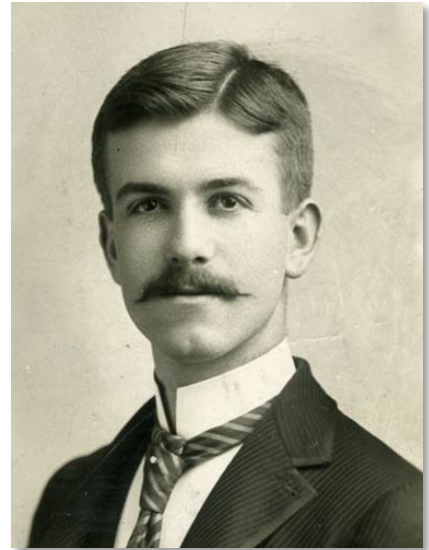
By: Dr. Neal Meadows

Ralston Purina Company

	<p>Atlas O Ralston Purina 40' wood ice reefer. 2 rail or 3 rail. \$99.95. Road #MRS 5585</p>
	<p>Roundhouse 8943 Reefer, ice, 36-foot, Wood, Truss rod – Ralston Purina # MRS 5507. Released 8-1-2000 for \$11.98 – N scale</p>
Ty 	<p>Tyco – HO Scale – Ralston Purina Co. MRS 4554 wood ice reefer. Used \$8.90</p>
	<p>S&P Whistle Stop ATM20002014 HO-scale 40-foot reefer Ralston-Purina No. MRS 5592 \$37.85</p>
	<p>Atlas 41492 – N scale - Ralston Purina MRS 5592 40-foot wood ice reefer. Released 9-1-2005 for \$16.95</p>



Ralston Purina Company, former American manufacturer of cereals, packaged foods, pet food, and livestock [feed](#). A merger with [Nestlé](#) in December 2001 created [Nestlé Purina PetCare Company](#).



The company—initially called the Robinson-Danforth [Commission](#) Company—was founded in St. Louis, [Missouri](#), in 1894 by William H. Danforth, George Robinson, and William Andrews. In 1898 Danforth, the president of the company, launched a cracked-wheat cereal

that became known as Ralston Whole Wheat Cereal (after a well-known health promoter of the 1890s, Albert Wester Egerly, known as “Dr. Ralston”). A savvy promoter, Danforth renamed the company Ralston Purina and introduced the red-and-white checkerboard logo in 1902.

[Consumer](#) sales grew through new cereals such as Wheat Chex (launched 1937) and Rice Chex (introduced 1950). Ralston Purina began selling in overseas markets in 1957, acquired Eveready Battery in 1986 (spun off in 2000), and moved out of the agricultural feed business in the 1990s. [General Mills](#) acquired Ralston’s [breakfast cereal](#) business in 1997.

1867 - HENRI NESTLÉ



In 1867 Henri Nestlé developed the first source of nutrition for children who couldn’t be breastfed by their mothers and founded the Nestlé company.

Shortly after, the company began to manufacture chocolate milk and after, many other products followed.

1894 - ROBINSON-DANFORTH



In 1894 Robinson-Danforth was founded, as a balanced food production company for animals, becoming the first company in the world to offer such products

1902 - RALSTON PURINA®



Ralston Purina began as an alliance between Purina and the nutrition specialist, Dr. Ralston, to produce whole grain cereal. The challenge was to make people eat cereal for breakfast.

The name Purina was created thanks to the company slogan at the time: “Where purity is supreme”.

The red and white square logo comes from a childhood memory the creator, William Danforth, had when his neighboring family, the Browns, dressed all their children with this peculiar pattern to identify them at the Universal Exhibition in St. Louis, Missouri.

In 1902, Danforth adopted this distinctive pattern, and the pet food company changed its name to Ralston Purina.

1904 – The St. Louis World’s Fair, also known as the Louisiana Purchase Exposition, is held at St. Louis, Missouri, in 1904 to commemorate the centennial of the purchase of the Louisiana Territory (in 1804). Ever the alert

businessman, Will Danforth takes advantage of this by selling his cereal – “the most perfect whole wheat food ever made” – in an outside carrying bag covered with a checkerboard pattern, with the word “Ralston” written across the top of both sides. He even distributes posters titled “You Will Never Forget the World’s Fair and Your Ralston Box: Begin to Live – now!”



In volume 1 of a two-volume book on the fair, in the section titled “The Concessions,” a full-page table (page 587) states the Ralston Purina Co. sold \$17,263.10 of “Purina Foods” – breakfast cereals.

1909 – William H. Danforth and a group of friends in St. Louis revive the old custom of meeting to sing Christmas carols. They do this for the sheer pleasure of singing and of bringing Christmas songs to others. There is no particular plan or organization. The group of carolers grows each year, and they find themselves the recipients of many gifts, wholly unsolicited. Such gifts are turned over to the Children’s Aid Society. Then in 1924, the Christmas Carols Association is formed and the Danforth genius for organizing is applied. Up to the time of his death he had been the Association’s only president (Ralston Purina Co. 1978. Oct. “William H. Danforth.” News release).

1921 – “During the First World War, Mr. Danforth served with the Third Division, American Expeditionary Forces. His keen sense of sales promotion, which characterized his entire business life, followed him to the battlefields of France as he observed the enthusiastic connotation that the word ‘chow’ brought to soldiers in the field. Rations labeled ‘chows’ seemed to out-taste and out-satisfy just plain food, so when he returned to his business after the war, he applied the name ‘Chow’ to all livestock and poultry feeds which his company manufactured. Thus, came into being the famous ‘Purina Chows.’ (Ralston Purina Co. 1978. Oct. “William H. Danforth.” News release), hence "Purina Horse Chow", "Purina [Dog Chow](#)", "Purina Cat Chow", "Purina Rabbit Chow", "Purina Pig Chow", and "Purina Monkey Chow".



1926 - PURINA® PETCARE CENTER

Donald Danforth, son of the founder of Purina, begins to study animal nutrition to help his father to maintain his leadership in the market. Ralston Purina Co. establishes a 712-acre research farm at Gray Summit (43 miles southwest of St. Louis), Missouri to test, under real-life conditions, the effectiveness of its various scientifically formulated livestock, pet, and poultry feeds. A lot of research using soy meal and oil was conducted on this farm.



1933 - PURINA® DOG CHOW CHECKERS®

By recommendation of the Massachusetts General Hospital, the dogs of renowned Admiral Richard E. Byrd were fed with Purina Dog Chow Checkers during their expeditions through Antarctica, recovering their strength in harsh conditions.



1956 - PURINA® DOG CHOW®

Ralston Purina innovates with the launch of its first pressure cooked dry dog food, in various kibble formats, with exclusive packaging for the market.



1963 - PURINA® CAT® CHOW® / KIBBLES

Cat Chow and Puppy Chow are launched. The first factory in Latin America opens: Campinas, Brazil.

In 1986, Ralston Purina sold Purina Mills, its US animal feed business, to [British Petroleum](#). Purina Mills is now owned by [Land O'Lakes](#). In 1994, the Ralston "human food" operations of the Ralston Purina Company were spun off into a new company called [Ralcorp Holdings](#). In 1998, Ralston Purina spun off its international animal feed business as Agribands, which was acquired by [Cargill](#) in 2001.^[4] The animal feed businesses continue to use the Purina and Chow brands, which Purina Mills and Cargill license for use in the US and internationally, respectively.

1990'S - NESTLÉ® PURINA® PETCARE COMPANY



Nestlé Friskies buys the Alpo company.

The production of Ladrina and Dogui starts at factories in Santo Tomé, Argentina and Cuautitlán, Mexico.

Purina establishes the first and only DNA Distribution Center in the world and provides assistance to the best canine genome researchers.



2001 - NESTLÉ® PURINA® PETCARE COMPANY

In 2001, Ralston Purina was bought by Nestlé, who already owned brands such as FRISKIES®, FANCY FEAST®, ALPO® and MIGHTY DOG®.

Merger with Nestlé

Ralston Purina became the subject of an acquisition bid by Swiss-based [Nestlé](#), whose [Friskies](#) brand was the other leading US brand of pet food. Additional brands by Nestle were Fancy Feast, Alpo, and Mighty Dog.

Nestlé S.A. and Ralston Purina announced in January 2001 a definitive merger agreement. Under the agreement, Nestlé acquired all of Ralston Purina's (NYSE: RAL) outstanding shares for US\$33.50 per share in cash. The offer represented a premium of 36% over the closing price on Friday, January 12, 2001. The transaction had an enterprise value of US\$10.3 billion (\$10.0 billion equity plus \$1.2 billion of net debt, minus \$0.9 billion of financial investments).

Several brands of pet food (e.g., "[Meow Mix](#)") had to be divested separately to meet antitrust concerns. Purina brands are now made and marketed by a division of Nestlé (Nestlé Purina PetCare) which is still headquartered in St. Louis.

While primarily a pet-food company, Ralston Purina also made some other pet-related products, such as Tidy Cats brand and Yesterday's News cat litter, which is made from recycled newspaper, purchased from Edward Lowe Industries in 1990. Also, Purina has honored several Canadian animals every year since 1968 in their Animal Hall of Fame. The latest inductees included a police service dog which "rushed and subdued an armed robber".



2007 - FORTIFLORA® NUTRITIONAL SUPPLEMENT

Purina® Veterinary Diets® offers the first probiotic nutritional supplement; great tasting and easy to use. Various veterinary clinics nationwide recommend Fortiflora® Nutritional Supplement

Other Acquisitions and Diversifications

In 1974, Ralston Purina purchased and further developed the [Keystone Resort](#) in Colorado. "Checkerboard Flats" for kids and beginners at Keystone still bears their logo. In 1993, Ralston Purina also bought Breckenridge ski area for an undisclosed amount, from Victoria U.S.A. Inc, a Japanese sporting goods retailer.^[7] However, both ski resorts were sold in 1997 to Vail Resorts for \$331 million.

In 1977, Ralston Purina acquired Missouri Arena Corporation and the [St. Louis Blues National Hockey League](#) franchise. During the company's ownership of the team, they changed the name of the [St. Louis Arena](#) to the Checkerdome, reflecting the Ralston Purina logo. The franchise was sold to Harry Ornest on July 27, 1983.

Ralston Purina purchased the [Eveready Battery Company](#) in 1986,^[9] owner of the Eveready and Energizer brands. The company was spun off in 2000.

Ralston Purina purchased [Continental Baking Company](#), makers of [Wonder bread](#) and [Hostess cakes](#), from [ITT](#) in 1984. Ralston spun off Continental Baking Company, subsequently bought by Irving, Texas-based [Interstate Brands Corporation](#) (IBC).



Ralston Purina opened test market pizza stores called Checkerboard Pizza in 1986. The format was similar to Domino's and Little Caesars. They opened the stores in markets such as Moorhead, Minnesota, to test how the Midwestern market would accept the concept. They did well, but Ralston Purina decided not to enter the pizza franchise business and closed all pilots by late 1987.

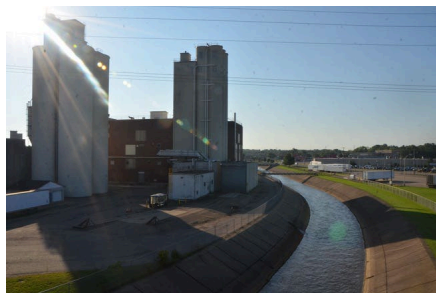
Ralston Purina also owned [Jack in the Box](#) fast food restaurants from 1968 to 1985, along with several high-end restaurants.

Ralston Purina owned [Van Camp Sea Food Company](#) from 1963 to 1988, a tuna cannery with Chicken of the Sea as its main product.

Ralston Purina owned an animal pharmaceutical company in the 1970s and 1980s.



The former Ralston Cereal plant at 150 McCamly Street South, Battle Creek, MI was sold February 2020.



The "cement river" is part of the Kalamazoo River that winds around the former cereal plant



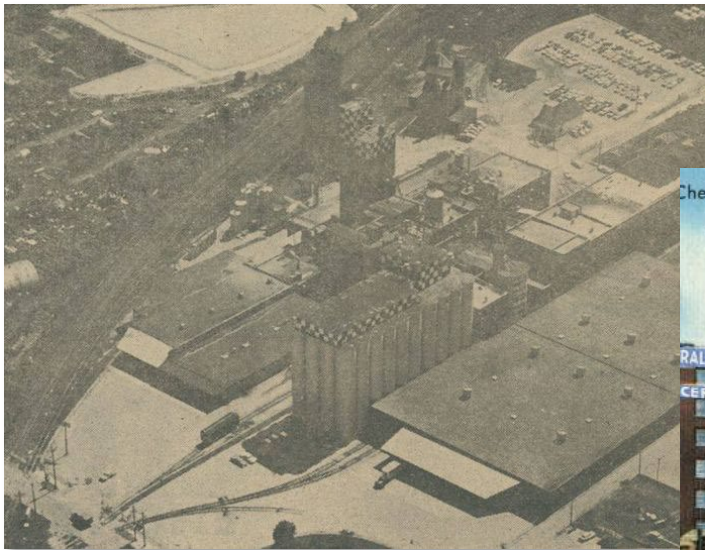
Plant expansion May 1961 at the Battle Creek Plant

Cereal production began at the site in 1901 at the Cero-Fruto Food Co.

"Ralston Purina became part of 'Foodtown U.S.A.' through its purchase in April 1927 of Battle Creek's Armor Grain Co. plant, long known as the Mapl-Flake Mills," Ross H. Collier wrote in his June 1, 1959, Enquirer and News history column.

Ralston-Purina Co. expanded the facility in 1960 as part of an 87-acre urban redevelopment "[slum clearance](#)," when the city cleared the former "Flats" or "Bottoms" residential neighborhood to make room for industrial and commercial developments. The factory continued to operate under the Ralston name until 2013, when it was acquired by ConAgra. In 2016, it was acquired by TreeHouse Foods.

Many railroad lines served the St. Louis area. It was a central point for merging rail lines to cross the Mississippi River. Those rail lines used the Union Station for freight and passenger service. St. Louis was served in the 1900's by the Missouri Pacific Railroad, the Missouri, Kansas, and Texas (KATY), Frisco, and others.



Ralston Purina plant at Checkerboard Square, St. Louis Mo. Home of Purina Chows.



Minutes for the July 19, 2022, BBMRA Meeting

President Andy Zimmerman called the meeting, held on July 19 via Zoom, at about 7:43 PM. There were 14 participants present at maximum.

Minutes – The minutes from the June meeting were discussed. Bob Feuerstein forwarded, and Drew Hackmeyer seconded a motion to accept the minutes as presented in the July Lantern. The motion was accepted without objection.

Treasurer’s Report – Neal Meadows mentioned he forwarded the sheet with the latest numbers along with show related specific documents to the group. President Andy then showed the document with the finances via Zoom functionality. There was then discussion of specific items in the finances including insurance. The BBMRA balance is not shared in the minutes but will be produced upon request by any club member.

Division Reports

Small Scale – There was not much discussed except that the modules and connections generally ran well at the show, particularly with the new power supplies procured by the club. There was then discussion of one problematic module and follow up on diagnosing the issue. James, a new BBMRA member, then reached out seeking advice on setting up a shelf layout and the best strategies to incorporate some desired items of his.

Large Scale – Sam Miller was absent, so nothing was discussed regarding Large Scale.

NMRA – There was no discussion of NMRA in this meeting.

HO – Phil Weston was absent and there was consequently no discussion as well.

Lionel Thomas Layout – Randy Lombardo gave a brief overview stating he thought the show went well despite one or two hiccups with track.

Switching Layout – Nothing was discussed.

Good of the Group – Barbara Donner mentioned some issues regarding the ticket booth where some folks that signed up were unable to show up. It later became clear that COVID- related issues were responsible for some of the absences and were unavoidable. There was then general discussion on the 2022 show and sale, and a reminder from President Andy to try as best as possible to help with packing up at the completion next year.

Randy commented that he did not see much O-Scale track on sale at the show but then there was discussion about some vendors who did have such track on sale.

Another mentioned item is that dues for the 2022/23 FY are receivable by July 31 with a one-month grace period

Bob F asked Barbara if she would like to take over general outreach.

There was then discussion about the slate of officers for next year

The proposed slate is as follows for voting in August:

President – Andy Zimmerman

Vice President – Stacy Elliot

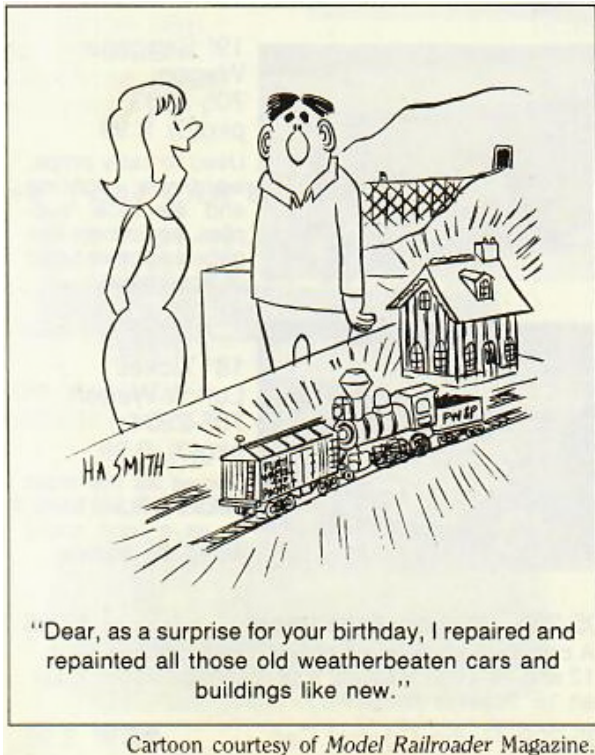
Secretary – Sheldon Harrison

Treasurer – Neal Meadows

The respective divisions will be taking nominations for division coordinators, and this will be addressed following the club wide elections.

The business portion of the meeting was then concluded at 8:56 PM.

Submitted by Sheldon Harrison



Don't we just love it!

Cartoon courtesy of *Model Railroader Magazine*.