



THE Lantern

June 2023

Volume 28 Number 6

HEADLINES

- [June 24-25th Show a Vendors Sellout!](#)
- [June 20 Meeting: Final Show Planning](#)
- [Show by the Numbers](#)
- [BBMRA Layout Set-up Notes](#)
- [2023 Show Vendors](#)
- [Operating Layouts](#)
- [To Volunteer Your Time for 2023 Show](#)
- [Interesting Bits & Pieces About Show Vendors](#)
- [BBMRA Important Events for The Year](#)
- [Pay Your Dues!](#)
- [Minutes](#)
- [Out of the Past – Men & Mail in Transit](#)

32nd Tallahassee Model Train Show to be Outstanding! BBMRA has Sold Out its Vendor Space

From Sam Miller:

Andy Zimmerman, BBMRA President and the annual Show Coordinator, believes we could have filled a third Fairgrounds building for the June 24-25 show & sale. The 150 tables set aside for sales were scooped up by mid-May and Andy has 10 other vendors on a waiting list for cancellations. “We could fill up a third building,” Andy says. Perhaps, next year.

The Tallahassee Annual Model Railroad Show & Sale at the North Florida Fairgrounds, in its 32nd year, has become one of the largest and best attended in Florida, South Georgia, Alabama and Mississippi. I am a vendor at several shows, and this is bigger in terms of vendors and layouts than events in Dothan, Pensacola and Mobile, although those are fine, fun shows, and on par with Deland and the Villages near Leesburg.

There are 150 tables of new and used model trains of all scales and related inventory; 37 vendors, including 18 attending their first Tallahassee show; and a more balanced mix of N, HO, O and G than in the past. You are going to find a lot to buy, and remember, as Barrett Johnson has repeatedly told the Large-Scale Sunday Group, model trains “are not a need-based hobby!”

This year’s show features 14 operating layouts, including one of the largest N Scale T-Trak setups in the United States, with modules from other clubs from our region; BBMRA’s expanded HO T-Traks; the BBMRA Live Steamers; and also Thomas, O Gauge T-Trak, Lego, T and Z layouts. Andy turned down an O Scale layout from down the state because it would have taken up too much room. Maybe next year.

The show features on Saturday four of the quarterly workshops from the NMRA Sunshine Region Northern Division. ND Superintendent Bob Feuerstein, a member of our club, and Andy Zimmerman have made this a regular part of the Tallahassee show.



Workshops: submitted by Robert Feuerstein

Schedule for Workshops

- 11 am- Clinic will be Launched by the NMRA President Gordy Robinson from Scotland
- 11:30-12:30 am- Kenneth Hoot on the AP Program, achieving your MMR.
- 1-2 pm Modeling Realistic Freight Carloads. By Keith Kohlmann Kalmbach Author
- 2-3 pm- JMRI with Decoder Pro Demystifying JMRI. by Pulse of DCC columnist and Deputy Chair of the NMRA Standards and Conformance Team

June 20, 7:30 p.m. BBMRA Meeting – Last Minute Show Planning



BBMRA meets Tuesday, June 20, at 7:30 p.m. through Zoom.

Join Zoom Meeting

<https://us02web.zoom.us/j/87359055848?pwd=WTVtUDhBUmhXVFp3RkY4WWNnZ2NXdz09>

BBMRA Zoom: Go to Zoom Program or Internet site and use these codes.

Meeting ID: 873 5905 5848, Password: BBMRA2022

Our Show by the Numbers: BBMRA 32nd Annual Model Train Show and Sale

The Big Bend Model Railroad Association (BBMRA) is hosting its 32nd Annual Model Railroad Show and Sale at the North Florida Fairgrounds, 441 Paul Russell Road, Tallahassee, FL 32301 - corner of Paul Russell Road and South Monroe Street - on June 24 & 25, 2023. The times are 9 a.m. to 5 p.m. on Saturday, June 24, and 9 a.m. to 4 p.m. on Sunday, June 25. The set-up is Friday, June 23, beginning at 8 a.m. for exhibitors with layouts and 10 a.m. for vendors and until 5 p.m. Set up is available on Saturday, June 25, from 7 a.m. until 9 a.m., when the show opens to the public.

Show Details: Once again, BBMRA is hosting a two-day event housed in **Building 2** and **Building 4** of the fairgrounds with 24,000 square feet of train show offerings. We increased our square footage over the last couple of years to produce the absolute best the North Florida, South Georgia and Eastern Alabama area has to offer in model railroading.

New and used items from “G” scale to “Z;” products from LGB, Aristocraft, Lionel, American Flyer, Atlas, Bachmann, Kato, Con-Cor, Life-Like, and much, much more. Experts on model train design, layout, equipment, and construction will be on hand, along with vendors featuring a wide range of trains and other model railroad items. Some vendors will be offering other hobby items, including stuffed animals, floral pieces, radio-controlled cars and trucks and Lego toys.

Again, this year, the show will feature a dozen operating layouts. N and HO Scale T-Trak layouts will be featured, some as large as 40 feet-long. T-Trak aficionados from various clubs have interacted to form an alliance to promote T-Trak modeling at this show and others around the region.



Admission: Adults & Children 13 and over \$10 for the two-day event. Scouts in Uniform as well as children 12 and under are free.

Parking: Free day parking will be available. RV Overnight Parking is available for a charge. Please contact Andy Zimmerman for rates and confirmation of space.

Food: “Taste of Heaven BBQ & More,” food truck, featuring pulled pork, ribs and chicken, hamburgers, slaw dogs and more.

BBMRA Layout Set-Up Notes

See the division coordinators for additional details.

- Sal Martocci says the Live Steamers will set up beginning at noon Friday, June 24, in Building 4.
- Phil Weston says the HO Division will be starting the show T-Trak layout set up at 9:30 am, Friday, also in Building 4. "I'll plan to be there by 8:30 so folks can drop off their modules earlier if they need to," Phil says. "We plan to arrive about 8:00 am on Saturday & Sunday."
- N Scale: More details later, but Stacey Elliott says folks will begin work Friday morning at 9, assembling the N Scale T-Traks in Building 2.
- Large Scale Coordinator Sam Miller says his group will unload the O Gauge T-Traks Thursday afternoon at 2 p.m. if Building 2 is available. Actual work on Disney and the O Gauge T-Traks will begin Friday morning at 9 a.m. Ron Fletcher may unload the Garden Railroad layout Thursday afternoon if Building 4 is available. Randy Lombardo will set up Thomas the Tank Engine Friday afternoon.



2023 Show Vendors

Green means they are a new vendor.

A&S Trains, Aaron & Sarah Chamberlin, North Port, FL, eight tables, Building 4: new to the Tallahassee show; "a family-owned model train store dealing in all scales of model trains and mainly used items at this time."

James Barrett, Pensacola, FL, two tables, Building 4: HO new and used engines and freight cars. "I will be bringing several different brands of HO scale diesel locomotives, IHC steam locomotives and some loose and boxed freight cars to the upcoming Tallahassee show," James says.

Big Creek Hobbies, Spyro Papadimitriou, Sarasota, eight tables, Building 2: Comes to all of our shows, with vehicles, including a large selection in HO; other modeling items too.

Ralph "Pell" Brown, Pace, FL, one table, Building 4:

Capital City Comics and Toys, Daryl Gunter, Tallahassee, three tables, Building 4: Legos and wooden Thomas railroad items. He will operate a Lego train and accessories.

Walter Class, Crawfordville, two tables, Building 2: a new vendor; O & O-27, new & used engines, new & used freight cars, power supplies & track, scenic materials, books and custom train shelves.

The Craftsman Courtyard, Building 4:

- Motrack Models, Jeff Adam, Martinsville, VA, three tables; structures and detail parts for N, HO and O.
- Mudd Creek Models, Frank Salando, East Hills, NY, three tables.
- Rail-Scale Models, Steven Milley, Horse Shoe, NC, four tables; craftsman kits in N, HO and O.

Greg Garbacz, Citrus Springs, FL, two tables, Building 4: a new vendor; used HO, including engines, rolling stock, electronics, detail parts and books & magazines.

Aaron Goodman, Rainbow City, AL, four tables, Building 4.

Eileen Harris, Crawfordville, one table, Building 2: a new vendor, with railroading books and prototype lanterns.

Rick Heilman, Lynn Haven, FL, four tables, Building 4: a new vendor; O Gauge, new and used locomotives and rolling stock and new O Gauge vehicles.

Hobby Monstrosity, Marc Beshera, Tallahassee, Building 2: a former club member and once our show coordinator; one table for Lego trains and other Lego items; plus a Lego trains layout he will be operating at our show for the first time.

David Kirkland, Panama City, five tables, Building 4: railroading paintings and prints. David has been at the Tallahassee show often over the years, but not since before COVID. Some of us have his art in our homes.

Jacksonville Terminal Company, Steve Campbell, Jacksonville, four tables, Building 2: a manufacturer of N Scale accessories, shipping related. This is the first manufacturer to exhibit at our show to recruit retail vendors. It will not sell retail.

Edwin Jahnes, Ocala, FL, two tables, Building 4: a new vendor.

Becky Knowles, Face Painting, Tallahassee, one table, Building 4: face painting.

Koda's Model Train World, Rick Wolfe, Bay Minette, AL, two tables: 3D printer detail parts for most scales of model railroading. His second year here.

Chris Leone, Ponte Verde Beach, FL, three tables, Building 4: O/O-27, used engines and new and used freight cars. A regular.

Jay Leinbach, Tarpon Springs, one table, Building 4: a regular at our show; HO, new engines, new and used rolling stock, books and odds 'n ends.

Me Love Trainz, Kris Dixon, Cochran, GA, five tables, Building 4: a new vendor: new and used Garden Railroad trains and accessories.

Memory Station, Lewis Collier, Watkinsville, GA, eight tables, Building 4: Lionel and other O Gauge. An anchor vendor for us over the years, although he had a conflict last year and did not participate.

Sam Miller, Tallahassee/George Allen, Eastpoint; 11 tables, Building 2. George has vintage Lionel O Gauge. Sam has some O, but mainly used HO trains and accessories, including a selection of Marklin and other European trains. He will also be selling high quality, used On30 items for the first time. Also, some factory-new Bachman HO items.

Jason Mueller, Baton Rouge, LA, three tables, Building 4: a regular; die-cast airplanes and vehicles, usually O Gauge or larger.

Parts with Character, Darlene & Wes Leonard, Athens, AL, 10 tables, Building 4: Lionel O Gauge trains, accessories; and one of the largest collection of parts for vintage Lionel and other vintage models available.

PKG Railway Preston Knuth & Lily Maytorena, Navarre, FL, two tables, Building 4: a new vendor; two tables, die-cast.

The Railroad Yard, Ben Hickey, Covington, LA, two tables, Building 2.

Joe Ray, Wilsonville, AL: 10 tables, Building 2: all scales, new and used, but heavily N Scale. Joe is a long-time anchor of the Tallahassee show and other area shows.

Southeast Hobbies, Tom Davey, Greensboro, GA, five tables, Building 4: HO, new engines and new freight cars and weathered engines and rolling stock.

Todd Tait, HO, Hahira, GA, three tables, Building 2: used trains and accessories, heavily N Scale, usually.

T-Trak by Denniston, Stuart Denniston, Cantonment, FL, one table, Building 2: a new vendor with N and ZT-Trak modules.

Tuckers Train Supply, Terry Tucker, Pensacola, 12 tables, Building 2: another long-time regular at the Tallahassee show. Large inventory of new model railroading products, including HO and N.

Robert Walker, Palm Bay, FL, five tables, Building 4.

Judy Weston, Crawfordville, one table, Building 4: greeting cards and other originals. A new vendor (and Phil's wife).

TK Crested Creations, Tina Kool, Tallahassee, two tables, Building 4: train tumblers and painted items. This is her second year (Andy Zimmerman's sister).

Larry Weigel, Homestead, four tables, Building 4: used HO and N. Larry has been selling with us for a long time. He is also active in NMRA Sunshine Region shows. Larry says: "I have a lot of NMRA and collector cars this year."

Annalisa Zimmerman, Cookies by Annalisa, Tallahassee, one table, Building 4: cookies; Andy's wife.

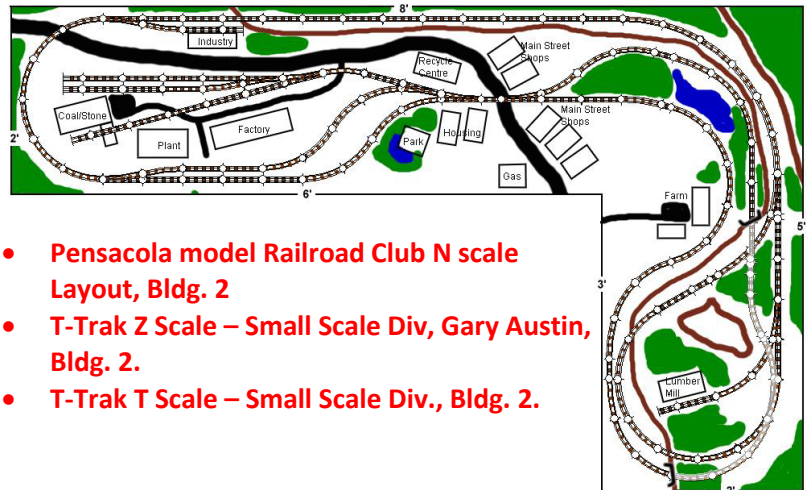
Operating Layouts. The layouts are in the same buildings as last year and, generally, in the same locations. One new layout, Lego trains from Marc Beshera in Building 2.

LARGE SCALE

- Live Steam, Bldg. 4.
- O Gauge T-Traks, Bldg. 2.
- Disney - O Gauge, Bldg. 2.
- Ron & Karla Fletcher, G Scale, Bldg. 4.
- Randy Lombardo's Thomas the Tank Engine, Bldg. 4.

SMALL SCALE

- T Trak N Scale, Bldg. 2.
- BBMRA N Scale Layout, Bldg. 2.
- Jim Valdez, Albany, N-Scale layout, Bldg. 2.



- Pensacola model Railroad Club N scale Layout, Bldg. 2
- T-Trak Z Scale – Small Scale Div, Gary Austin, Bldg. 2.
- T-Trak T Scale – Small Scale Div., Bldg. 2.

HO

- HO T-Traks, Bldg. 4.
- Lego Trains, Marc Beshera, Bldg. 2
- Lego Trains, Daryl Gunter, Bldg. 4

BBMRA Members: To Pledge Time and Support for the 2023 Show:

For general volunteering, contact BBMRA President Andy Zimmerman: SeniorChiefZ@outlook.com

- To work in the ticket booth, contact Andy Millott: millott32073@hotmail.com
- To help with the vendors, contact Andy Zimmermann or the division coordinators about Friday work and for Sunday breakdown, Sheldon Harrison: sh330300@protomail.com
- To help with HO activities, contact Phil Weston: phil.weston2@gmail.com
- To help with N Scale Activities, contact Stacey Elliott: staceyel@msn.com or Andy.
- To help with Large Scale Activities, contact Sam Miller: sammiller61113@outlook.com
- To help with Thomas the Tank Engine, contact Randy Lombardo: penncentralpatriach@comcast.net
- To help with the Live Steamers, contact Sal Martocci: Sal.Martocci@gmail.com
- To help with the Garden Railroad, contact Ron Fletcher: Ronald_fletcher@hotmail.com



Repairs Available for Favorite or Special Trains

It's getting harder and harder to find reliable repair work on model trains without returning the items to the manufacturer. If it is under warranty, that's the best route. If not, bring special or favorite trains to the June 24-25 show.

Tucker's Trains in Pensacola; Parts with Character, Darlene & Wes Leonard from Athens, AL; A&S Trains, North Port, FL, and Lewis Collier, Memory Station, Watkinsville, GA, , will be offering repair services. Other vendors may as well, but the Tuckers, the Leonards, and the Chamberlins responded to a survey from BBMRA offering details.

From Darlene Leonard, Parts with Character: "We appreciate the chance to be at the show. We will be bringing our "parts" which will include old and new parts for O gauge Lionel trains. Along with engines some in boxes, others without, accessories, box cars - new and Post-War. Wes also does repairs for both Lionel, and MTH. He also does restorations if wanted." The Leonards are in Building 4.



Terry Tucker

From the Tuckers: "We at Tucker's Train Supply are looking forward to another wonderful show with the Big Bend Model Railroad Association. We have been vendors for the last few years and always look forward to reconnecting with past customers and meeting new ones. Tucker's Train Supply carries the detail-items you need for scenery, track, and trains. We also have storage, electronics, buildings, some locomotives, and cars.

"Also available are repairs for N through G gauges and decoder/speaker installations. At the June show we would accept your train for repair or installation to travel back to our workshop with us. An initial lookover will be done, an average charge of \$25, then an estimate will be delivered to you before any work is done. So please stop by and see us and say hello."

Tucker's Train Supply is in Building 2.

From Sarah Chamberlin, A&S Trains:

“A&S Trains is an online retailer that sells Z-G scale locomotives and rolling stock. Scenery materials and structures are also available. We also carry Soundtraxx, Digitrax and ESU decoders and controllers. We offer DCC install and repair services. Our website is www.AandSTrains.com and our Facebook page is A&S Trains.” This group is in Building 4.



From the Memory Station Internet site:



“Memory Station is a family owned and operated. We are an Authorized Lionel Train Service Station.” (Lewis has repaired Lionel trains for Sam Miller and other BBMRA members in the past.) Lewis is in Building 4.

Interesting Bits & Pieces About 2023 Tallahassee Show Participants

From Sam Miller: We offered everyone purchasing tables for the June show an opportunity to provide interesting tidbits about themselves and the model trains they will be bringing. We heard from more than a dozen and are including their tidbits in the June pre-show Lantern.

Mudd Creek Models; “Those Scratch-Built Structures are so Good, You Should Sell Them”

(MuddCreek is part of the Craftsman Courtyard in Building 4.) From Frank Saladino, Mudd Creed Models, East Hills, NY:

“Mudd Creek Models, Frank Saladino and Natalie Sacco, started only 14 months ago in 2022. It was an idea to simply offset our retirement in the future...Our first structure was called ‘Mercantile’ and we were as nervous as hell getting started. I have been in the hobby for roughly 30 years as an N-Scale modeler and never imagined my scratch-builds would be good enough to market. For years people would tell me that I should sell the structures I was scratch building. During this 30-year period I watched as HO Scale manufacturers produced stunning kits but never offered them in N Scale, even when asked.

“My wife Natalie and I sought the help of our dear friend Stephen Milley of Rail Scale Models who guided us not only with action but with advice. We owe our success to him. Mudd Creek Models started as a N-Scale structure kit company and quickly saw a need for 3D printed parts. We recently became dealers of Hunterline stains. Our kits are all laser-cut wood, from the walls, to the roof cards, and the three-piece windows. Let’s not forget the roof shingles and tar paper... What are we bringing to Tallahassee? We’re bringing everything with us. N Scale and HO Scale Craftsman Kits, Hunterline Stains and 3D Printed N Scale and HO Scale detail parts.”

Homestead’s Larry Weigel has NMRA Focus

From Larry Weigel, Homestead, FL:

“I have been a regular at the Tallahassee show for years. Like the Dothan show, which I also always participate in, it is an opportunity to visit with my sister in Marianna. She helps me staff my tables. Over the years, I have been active in NMRA Sunshine Division shows and other events and have been able to buy collections from NMRA folks. This year, I will be offering lots of NMRA and collector’s cars.”

Former Hobby Shop Operator Offering Lego trains, Tamiya Kits

(Marc ran the Hobby Monstrosity hobby shop for several years. It was located on Capital Circle, across from the federal prison complex. He is a former BBMRA member and served a stint as the Show Coordinator.) From Marc Beshera:

I am glad to be back at the Tallahassee model train show. I will be running a Lego train display, including a motorized Lego train, an operating Lego Farris Wheel and other Lego accessories. I will have for sale Lego train sets and many other Lego items. I will also be selling Tamiya educational items, including engineering kits and gears."

(BBMRA member Daryll Gunter, Capital City Comics & Toys, will also be selling Lego trains and items. Marc is in Building 2, Daryll in Building 4.)

First Time Tallahassee Vendor has 1,200 Freight Cars, 500 Engines

From Greg Garbacz, Citrus Springs, FL:

"I've been selling here in north central Florida for about four years...I own over 1,200 freight cars and 500 engines. Almost all the cars have metal wheels and vary in age. A few are over 50 years old. Everything I have is good quality...While most of my items are older, they have all been tested, lubed, repaired (including preventative maintenance) to insured the highest quality and longevity. I have both DC and DCC and sound locomotives. I also sell some structure kits and structures (built).

"...I also have a few books, magazine special editions, railroad paper, pins and misc items. Along with the train items I sell a modest selection of parts and accessories. I accept credit cards through Square POS terminal on my phone."



Greg Garbacz, Citrus Springs, FL

Sam in Tallahassee Offering On30 and Märklin Trains, as well as Lots of HO

From BBMRA member Sam Miller:

"George Allen from Eastpoint and I will be sharing tables near the O Gauge t-traks again this year. With 11 tables, we are one of the largest sellers at the show. George will have vintage Lionel and other O Gauge. I will have a ton of new and used HO as usual, but a couple of different lines for me and my LLC. My tables will feature On30 engines, rolling stock and accessories, primarily Bachmann Spectrum. Also, something new for me is a batch of European HO trains, primarily Märklin, and Bauer.

"See me for landscaping supplies, including Woodland Scenics and JTT Scenics; a large selection of HO figures and vehicles; a bunch of used HO buildings; and lots of other stuff. Thank you."





N Scale Manufacturer, JTC Model Trains, Commits to June 24-25 Show

From the January Lantern:

“I have a new manufacturer slated for the June show, a manufacturer not a vendor like Terry Tucker or Joe Ray, to sell. That will be our first manufacturer to come,” said Andy Zimmerman, BBMRA Andy says. He hopes to recruit other manufacturers as well.

From the JTC Model Trains Internet site:

“**Jacksonville Terminal Company** LLC (JTC Model Trains) was established in November of 2017 by two N scale modelers who have a passion to deliver Quality products to the model railroad industry. We are a Family-owned business based in the U.S.A., established upon several core factors. The **First** driving factor behind the business is to deliver high quality products, as close to prototypical as ‘reasonably possible’, while being a competitive Value. **Second** factor is that the modelers **MUST** be the beneficiary of the JTC products, to enhance Modelers efforts in creating their miniature worlds. **Third**, JTC likes to produce models that have not been made before, and that also are more prototypically accurate products, than are currently on the market.”



The CRAFTSMAN COURTYARD

Model Railroad Structures - Lighting - Scenery - Details - Demos - Displays



Shoe, NC, four tables; craftsman kits in N, HO and O.

From Stephen Milley, Rail-Scale Models:

The Craftsman Courtyard is just a grouping of ‘craftsman vendors’ - structures, rolling stock, details, etc. We group ourselves together to drum up interest from attendees.... gives us a chance to use our activity for some publicity.

We do this at different shows, and vendor participation varies from show to show.

The three of us attending have a great variety of products, so hopefully that attendees will enjoy our product displays.”

- Motrack Models, Jeff Adam, Martinsville, VA, three tables; structures and detail parts for N, HO and O.
- Mudd Creek Models, Frank Salando, East Hills, NY, three tables.
- Rail-Scale Models, Stephen Milley, Horse

Me Love Trainz: Georgia Shop Garden Railroad Trains & Accessories

Kris Dixon, Cochran, Georgia:

“We are offering any and all G Scale items!! Engines, rolling stock, track, power supplies, buildings. We look forward to coming down to Tallahassee. It's gonna be a great show.”



Kris, his wife, Charlotte, and their good train friend Joe.



Collector Who Wants the Hobby to Grow

Rick Hellman, Lynn Haven, FL, MTH O Gauge:

I have bought a few collections over the years, and I also am constantly on the hunt for good deals for my collection and to pass on to folks when I go to the show in Pensacola and now Tallahassee...

"I will be bringing a pretty good inventory this time with lots of rolling stock, accessories, buildings, some parts and an assortment of steam and diesel engines that have all been run on my personal layout at one time or another. Most of what I am bringing is MTH and a lot of that is purple boxes (Premier) so there should be like a feeding frenzy!"



Just a teaser for what Rick is bringing to the Tallahassee show.

Koda's Model Train World: 3D Resin Accessories

Rick Wolfe, Bay Minette, AL:

"I started Koda's Model Train World in January 2021. We sell model train accessories that are 3D resin printed. We are adding new items all the time...All our products come fully assembled and painted (some even weathered). Our moto is 'Just drop and go'.

"We carry mostly HO Scale items but do have some N Scale and a few O Scale items."



Rick produced these 55-gallon oil drums and pallets.

"A Pre-Estate Sale" Sale (HO)

James Barrott, Pensacola:

"I am not a business, just trying to sell off my train collection as no one in my family wants them. You might consider this a pre-estate sale sale...I started with 650 locomotives, plus approximately 10,000 cars. I have sold some but still have plenty. Locomotive brands are Athearn Blue Box and Genesis, Atlas, Bachmann, Broadway limited, IHC, Kato, Proto 2000 and AHM/Rivarossi. Cars include Accurail, Athearn, Atlas, Front Range, Proto 2000, Roundhouse and Walthers.

"I never know what I will bring as I am selling on eBay (6792jamesb), as well and can only fit a small amount of my collection in my vehicle. I plan to have boxed locomotives, mixed, but lots of SP. Boxed and loose cars, mostly freight with a few passenger cars."



T-Trak by Denniston

Stuart Denniston, Pensacola:

“This will be my first Tallahassee show as a vendor. I've been attending this show as an exhibitor with the Pensacola Model Railroad Club N-TRAK division and last year as a PMRC T-TRAK member.

I build stock and custom T-TRAK modules in N & Z scale. They're all made with USA sourced materials, and I can even install tracks on them if you'd like.

“Year-to-date I've built and shipped 87 modules for individuals and clubs from Seattle, Los Angeles, Kansas, Missouri, Nebraska, New Jersey and many more...

“I will bring 12R outside corners, 12 singles, 8 doubles and 2 bridge doubles for sale at y'all's show.”

Some of our Other Fine Show Participants for 2023



Ben Hickey, The Railroad Yard, New Orleans



Spyro Papadimitriou, Sarasota.



Joe Ray, Wilsonville, AL





Daryll Gunter, BBMRA member and his family



BBMRA Important Events in 2023!!



Help us build this calendar. Email sammiller61113@outlook.com. Please confirm that an activity is still on before you travel to it. We are listing Internet links whenever possible.

Here is a terrific national calendar:
https://www.railserv.com/events/train_shows.html

BBMRA meetings are the third Tuesday of each month. We have resumed meeting through Zoom only because of the COVID resurgence.

BBMRA Zoom: Go to Zoom Program or Internet site and use these codes.

Meeting ID: 873 5905 5848, Password: BBMRA2022

Lionel Interest Group Operating Sessions: most Sundays at 1:30 p.m. at Sam Miller's house in Woodgate. Call (850) 459-3012 for further information. No session June 18th because it is Father's Day and Linda Medlin's birthday. No meeting on June 25 because of the show. We resume our regular Sundays on July 2.

June 23-25, 2023: 32nd Annual Tallahassee Model Train Show & Sale: North Florida Fairgrounds, Tallahassee. Setup is Friday, June 23. Show hours are 9 to 5 on Saturday and 9 to 4 on Sunday. <http://bbmra.club/>

June 24, 2023, Sunshine Region NMRA Northern Division Workshop: In conjunction with the BBMRA annual train show and sale at the Leon County Fairgrounds, 441 E Paul Russell Rd, Tallahassee.

September 16-17, 2023, The Villages Model Train Show: Savannah Regional Center, 1545 N. Buena Vista Blvd., The Villages, FL, 32162. Saturday, 9 a.m. to 4 p.m.; Sunday, 10 am. To 3 p.m. Admission \$7; children under 12 free.

September 16-17, 2023, 2023 Wiregrass Steel Wheels model train show: National Peanut Festival Fair Grounds, Dothan, AL. Admission \$6.00 for everyone 7 and up, 6 and under are free. Saturday, 9 a.m. to 4 p.m.; Sunday, 10 a.m. to 4 p.m. (Times are Central).

October 2023, Possible Festival in Havana, Florida hosted by the Shade Tree Tobacco Museum. They have asked us to display and run trains at this event. Stacey Elliott, Neal Meadows, Bob Feuerstein, and Andy Zimmerman have visited and talked with the group about possibly attending the event with our layouts. More to come about this!

December 9, 2023, Woodgate Neighborhood Model Trains Open House: 1:30 to 3:30 p.m., at Sam Miller's house in Woodgate.

Pay Your 2023-24 Dues at June Show or by PayPal

BBMRA dues must be renewed by late summer and an easy way to do that is at our upcoming show. There will be a membership table at the front of Building 2, near the side door. You can also renew with Treasurer Neal Meadows and the division coordinators. They request that the \$20 in dues for 2022-23 be in a personal check with your name and address on it, if possible. **If paying with cash, please pay at the ticket booth.**

BBMRAers will be welcoming new members during the show as well and the event has become our single best recruiting tool over the years.

The BBMRA now has the option for new and current members to pay their dues online by using the PayPal link on the BBMRA.ORG website. It is under the Membership menu item. When you select the PayPal button you will get the option to use your PayPal account if you have one or use a credit/debit card. The dues are \$21.25 using this method, 2 years for \$42.00.



BBMRA dues are \$20 a year and must be paid by July 30, under club bylaws. Over the years, however, we have not considered dues delinquent until the end of August, BBMRA President Andy Zimmerman says.



Minutes from the May 16, 2023, Meeting of BBMRA

Minutes May 16, 2023

Submitted by Neal Meadows for Sheldon Harrison

Vice President Stacey Elliott called the meeting held on May 16, 2023, via Zoom to order at about 7:40 PM. There were 10+ participants present at the meeting. President Andy Zimmerman was delayed attending the meeting.

Pre-Meeting Discussion – There was general discussion about what each of the members were working on or trips that they had taken. Neal mentioned that he and his wife Jane were going on the Rocky Mountaineer in September. Sam Miller is on one of those trips at present. Those that had been previously told Neal that is was a great trip. Neal mentioned that we will have a credit card terminal to use at the ticket booth at the Show in June.

Minutes – The minutes from the April 18 meeting in the Lantern were discussed. Bob Parmenter then forwarded, and Phil Weston seconded a motion to accept the minutes as presented in the May Lantern. The motion was accepted without objection.

Treasurer's Report – The Treasurer's Report was eventually shown late in the meeting. Neal Meadows shared information about expenditures, especially the rental fee to the fairground association. Some questions were asked about the potential income from the show. Neal shared the income from last year to provide a picture of what can happen. A motion to accept the report was moved by Ed and seconded by Phil. The motion passed without objection.

Division Reports

Large Scale – Sam Miller was away on the train trip and was not present to submit his report.

HO Scale – Phil mentioned that HO has been updating the modules and planning for the show. He mentioned that several items had been donated by the Don Meeks family. Phil has shared the list with his HO guys and some have already used some in their modules.

N-Scale – President Andy mentioned ongoing plans for the T-Trak layout for the show. He wanted to have the Garth Easton Memorial Railroad on display at the show this year. Some minor work still needs to be completed before the show.

Switching Layout – There was discussion regarding whether Joe will be able to participate in the show with the layout and he was encouraged to do so if at all possible.

NMRA – Bob Feuerstein mentioned clinics that will be presented at the show sponsored by the NMRA Northern Division of the Sunshine Region.

Show Logistics – There was discussion of the number of tables already sold. 147 tables were sold as of the 15th of May. First time ever that early. A waiting list will be started for those expressing interest in additional tables.

Good of the Group

Andy Millott shared about the list for signing up to serve in the ticket booth at the show.

OUT OF THE PAST – MEN AND THE MAIL IN TRANSIT

By: Neal Meadows, Ed.D.



The Louisville & Nashville mail car model (HO)

National Postal Museum – Smithsonian Institute Washington, DC

The prototype for this model train car is a Louisville & Nashville Railroad Railway Post Office (RPO) car. This model train is an HO-scale model, which stands for Half-O gauge. Each HO-scale model is 1/87th of the full-size prototype.

A surviving example of a Louisville & Nashville Railroad RPO car is car #1100, currently on exhibit at the Steamtown National Historic Site at Scranton, Pennsylvania. The builder was American Car and Foundry Company in 1914. It is an example of a first-generation steel-body RPO car. Service was from 1914 until 1957.

My mother-in-law was Cora Lee Davidson. She worked as a postal clerk for over 30 years and retired from the post office in Crestview, FL. **For her 87th birthday on July 5, 2008**, we took her and Jane's brother Glen and his wife Sharyn to Washington, DC to visit her granddaughter Julie Granger and visit the sites during the 4th of July. We visited the **National Postal Museum** as one of our places of interest. We saw the display model of the Railway Postal Office Car and toured the inside. Cora Lee remembered many of the items on display from her 35 years with the Postal Service.



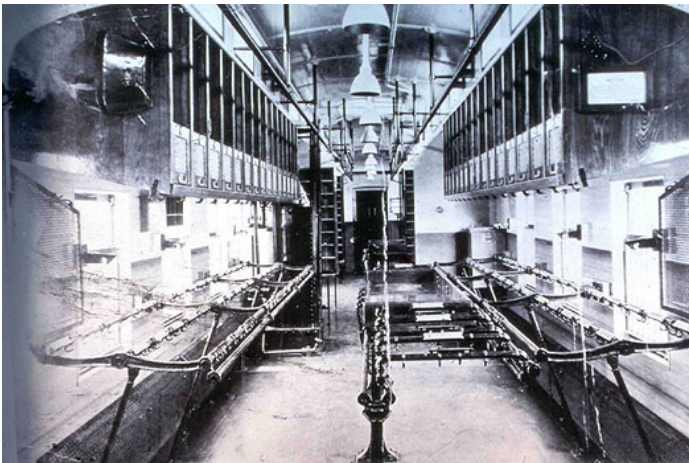
The Railway Mail Service revolutionized the way mail was processed by sorting mail aboard moving trains. Railway mail service began in 1832 but grew slowly until the Civil War. In 1862, mail was sorted en route, as a train moved between two points. The idea proved to be exceptionally successful, and as the postal service decentralized its operations, it concentrated on sorting much of the growing volume of mail while it was being carried on the nation's rail lines.

This new method of sorting the mail was developed just when railroads began to crisscross the nation on a regular basis. The service grew as railroads came to dominate America from the end of the 19th century through World War II.

Sorting mail on moving trains was one of the postal service's great innovations. After the Civil War, Post Office officials worked to decentralize operations, concentrating on the growing volume of mail carried on the nation's rail lines.

Mailbags left untouched on railcar floors were now emptied and their contents processed as the train sped toward its destination. This new method of sorting mail en route was developed just as railroads were connecting to every corner of the country.

By the early 1900s, railroads were critical to postal operations. Like Union Station in Washington, D.C., located adjacent to the City Post Office Building, the Post Office Department ordered that all new main post offices in large cities be built as near as possible to the principal railroad station.



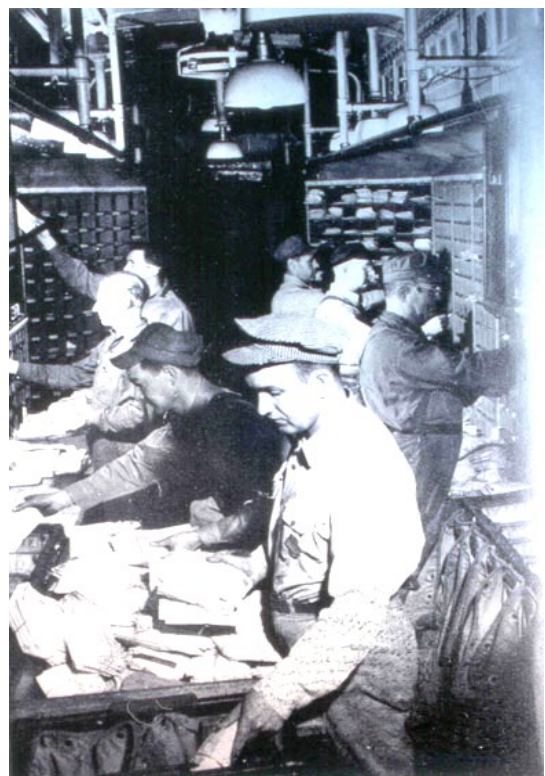
Even when empty, there was little space to move around on the mail car.



Railway Mail Service clerks worked in cramped quarters on moving trains.



From the 1870s-1940s, trains moved most of America's mail. The closer a post office was to the train station, the



Railway mail clerks had little room to maneuver as they worked the mail en route.

faster mail could be moved.



The exterior of the Railway Mail Service car on exhibit in the Museum's atrium was fabricated by exhibition designers. The interior consists of authentic furniture and pieces removed from a retired Railway Mail Service car.



Railway mail clerks talk about their job. Filmed in 1993, Mail By Rail is the story of the Railway Post Office clerks, as told by four ex RPO clerks, Tom Clifton, Harold Coffman, Winston Lark and Don Shenefelt.

Click on the picture to view the video!



Clerks working in Railway postal car, cir. 1935



Train catcher arm on display in the National Postal Museum

Railway Post Office clerks were considered the elite of the postal service's employees. Their jobs were exhausting and dangerous, their entrance tests demanding—a passing grade was considered 97%. They were required to sort 600 pieces of mail an hour. To ensure that the clerks' skills didn't rust, they were tested from time to time to ensure they could maintain that pace.

These clerks had remarkable camaraderie, helping each other out as needed. As one retired clerk put it, "nobody sat down until everyone was finished." The clerks adopted a fascinating shorthand language for their work, including the term "nixie" for an unsortable or misaddressed letter and "bum" for a damaged or empty mail sack. Before leaving the station, one clerk might yell "throw the bums out," meaning to toss out the empty mailbags. Another could yell, "Seventy-six in the house," noting that the mail from Trail #76 was on board. Since there was no time to read an entire mail label, clerks shortened them into nonsense phrases. Thus, the announcement of mail from the "New York and Pittsburgh Train 11, two, from Madison Square Station, New York, New York," transformed into the cry "From the Madhouse with a two!"



Click on the picture to watch the train taking up a mail bag from a mailcrane.

Below is another interesting video made in 1956. Men and Mail in Transit. Click on the picture to view it.



This media is provided by YouTube.

Mail clerk grabbing mail "on-the-fly"

Mail-on-the-Fly

As early as 1865, before the arrival of mail cranes, mail was exchanged on nonstop trains, but to do so, engineers had to slow trains down to a crawl so clerks could exchange the mail by hand. This system, both inefficient and dangerous, was soon scrapped. The first track side Railway Mail Service cranes were wooden, F-shaped, mechanisms. They were soon replaced by a simple steel hook and crane.

As tremendously successful as it was, "mail-on-the-fly" still had its share of glitches. Clerks had to pay special attention to raising the train's catcher arm. If they hoisted it too soon, they risked hitting switch targets, telegraph poles or semaphores which would rip the catcher arm right off the train. Too late, and they would miss an exchange. Each missed exchange netted a clerk five demerits.

Missed exchanges were a special threat on a handful of eastern runs that had less than a minute between some exchanges. On single line tracks, mail cranes could appear on either side, and woe be to the new clerk who, alertly looking out the right-hand side of the train, missed a series of mail cranes on the left-hand side. Experienced clerks on board night mail trains relied on the sound or "feel" of the tracks, knowing by the train's speed or the curves of the track how far away they were from a mail crane.

Exchanging the mail was a two-part process, after the clerk snagged the mail bag with the catcher arm, he had to toss out the mailbag for that station. If a clerk did not kick the mailbag out far enough, it could get trapped beneath the wheels of the train, bursting open and sending letters flying everywhere. The clerks called such small disasters "snowstorms." On the other hand, too much "oomph" could also cause difficulties. One poor clerk tossed the mailbag out with such force that it sailed through the bay window of the station house. Another clerk kicked off his shoe along with the bag.



Trip to Washington DC July 4, 2008

We enjoyed walking on the mall that day. There were four states that had exhibits that day. Apparently, they changed the states on a rotation basis. Our favorite was the Louisiana exhibit. They featured the Zydeco dancers. That was a riotous event. The parade was grand. We walked about a million miles that day and it was extremely hot. The pictures are of all of us at the parade and Cora Lee in front of the old post office and in the Postal Museum exhibit. We had a fine time.



Instead of stopping at every small town to transfer the mail, railway mail trains were fitted with catcher arms that snatched mailbags off of cranes such as this.



National Archives Building.



Uncle Sam walking tall.



Iwo Jima reenactment on the float.



Washington Union Station.



Postal Street in Washington DC.



Cora Lee with the Old Post Office in the background.



One of the old mail delivery trucks.

A major plus was Julie worked with Citibank at the time. They had a party on the top of the building (8 stories) on Pennsylvania Ave. We could see all the fireworks. We had the best seat in the city!

See You at the Train Show!