



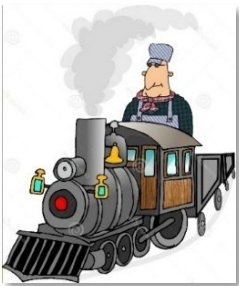
THE Lantern

November 2023

Volume 28 Number 11

HEADLINES

- [BBMRA Meeting](#)
- [Lot of Model Railroading Coming](#)
- [BBMRA & Sopchoppy Connection](#)
- [Pensacola Railfest Rescheduled](#)
- [An Old Suitcase of Old Trains](#)
- [Metcalf Sawmill Closing](#)
- [BBMRA Important Events](#)
- [Signals from the Sunshine Region](#)
- [Out of the Past – Galloping Geese & Other Odd Birds](#)
- [Enhancing the Thomas Christmas Layout](#)
- [Minutes](#)



November 21, 2023

BBMRA meets Tuesday, November 21, at 7:30 p.m. through Zoom. The program is still being developed.

Join Zoom Meeting

<https://us02web.zoom.us/j/87359055848?pwd=WTvtUDhBUmhXVFp3RkY4WWNnZ2NXdz09>

BBMRA Zoom: Go to Zoom Program or Internet site and use these codes:

Meeting ID: 873 5905 5848, Password: BBMRA2022

Lots of Model Railroading Fun in Coming Weeks



If you like trains – real or modeling – there is plenty to do the remainder of this year, especially around the Christmas and Jewish Holidays.

Here are details of some upcoming activities:

Senior Center BBMRA Operations, December 14, 6:30 to 8 p.m.: For the third year, the Big Bend Model Railroad Association will operate trains in a special holiday event at the Tallahassee Senior Center for seniors, grandparents, and their grandchildren. The operating session is from 6:30 p.m. to 8 p.m. on Thursday, December 14. Set-up begins

at 4:30 p.m. We have the entire auditorium on the second floor and will be bringing several small layouts - two O Gauge layouts, Walt Disney, and Thomas the Tank Engine, plus, an HO T-Trak layout and Neal Meadows' N Scale holiday layout. There may be other layouts as well; we have plenty of room.

Woodgate Neighborhood Holiday Trains, Saturday, December 9, 1:30 to 3:30 p.m.: Large Scale Coordinator Sam Miller and the Sunday Group will host an outdoor-trains open house for the Woodgate Neighborhood at Sam's home, 3008 Stillwood Court, Tallahassee, 32308; on Saturday, December 9, from 2 to 4 p.m. Sam's garage Lionel layout will be full of

holiday carnival rides and lights. Marc Beshera will set up a Lego train. A smaller HO layout will be on display in the driveway, with HO and On30 trains. BBMRA members are welcome to come by.

Veterans Memorial Railroad Polar Express 2023: From the VMRR Internet site: The Christmas Polar Express will be operating full steam ahead at Veterans Memorial Park in Bristol beginning December 1 and with added after Christmas dates. Until December, the operating schedule is limited to the second Saturday of each month and special reservations.



The Christmas “Polar Bear Express,” is an amazing ride over one mile of track around the park to view thousands of lights and life-size scenes, including Santa’s Village, Polar Bear Mountain, an extensive Frozen scene, Western Town, and other scenes. This unique train ride is designed to delight all ages.”

VMRR Polar Express: Operating sessions for the Polar Express are scheduled for 7 p.m. to 10 p.m., Eastern, on 14 nights in December. Many trips will be pulled by the Crown, a wonderful steamer. The dates are December 1,2,8,9,10,14,15,16,17,19,20,21,22,27!!!

The rides are about 25 minutes long around Veterans Memorial Park to and from the Tom Keenan Station. For additional information, go to the Internet site or call: (850) 643-6646.

If the night you want is sold out of Reservation Tickets come on anyway! We have General Admission every evening when the train is running. Just walk up and buy a ticket. Tickets are \$15 for adults and \$10 for kids 12 and under. Children two and under ride free. The address is 10561 NW Theo Jacobs Way, Bristol, FL 32321

Click here to order tickets: <https://www.veteransmemorialrailroad.org>

The BBMRA & Sopchoppy Depot Connection

From Phil Weston, HO Coordinator:

On Saturday, September 9, 2023, the Big Bend Model Railroad Association HO Division participated in the Sopchoppy Depot Day Festival at the Depot and the Towle House that adjoins the historic Georgia, Florida & Alabama (GF & A) Railroad Depot in Sopchoppy, FL.

I thought, perhaps, fellow BBMRA members might like to know how the connection between the BBMRA and the folks at Sopchoppy transpired. It’s a multi-year story.

In about 2018, I met Nelson and Jamie Martin of Sopchoppy. Nelson is an intriguing person with a huge interest in local history. He was instrumental in acquiring the old GF&A Depot (built in 1893) and transporting it to its original location in the center of Sopchoppy. He worked with officials of the City of Sopchoppy, various Trail Associations, members of event committees and other volunteers to gain grants and funding to restore and develop the depot as a museum in 2010. The museum highlights the historic story of the GF & A Railroad with exhibits, and a collection of old photographs, memorabilia, and recovered artifacts.



Nelson also acquired the Towle House (built in 1896) and had it transported to its present location adjoining the depot in 2001. The Towle House originally was a two-room building separated by a “dog trot” that allowed ventilation and covered passage between the rooms. Recognizing the need for additional space, the narrow 8-foot “dog trot” was removed and the building expanded to provide a 30-foot central room to host events and activities.

As I talked with Nelson, he showed me the wonderful exhibits that the museum contained including some of the historic products produced in the

area such as lumber, turpentine, naval stores, tobacco, and Fuller's earth that were transported during the development of the GF&A. We discussed the GF&A Railroad specifically and the potential that a model railroad display could be developed for the museum. There was limited space available for a display in the depot so I recommended that a stationary "N" Scale display might be suitable. Nelson contacted fellow BBMRA member Sal Martocci who was an acquaintance. Together, they developed a stationary display for the interior of the depot.

As we discussed the GF&A, I decided that I needed to do some research myself to further my knowledge of the GF&A. I began to research online, and in the Seaboard Coastline Magazine. I encountered the old GF&A right of way in the Apalachicola National Forest and found that the railroad ran from Richland, GA down to Tallahassee and then to Carabelle, FL.

The Georgia, Florida, and Alabama Railroad (colloquially the Gopher, Tortoise & Alligator Railroad) began in 1895 as the Georgia Pine Railroad before becoming the GF&A in 1906, The railroad operated until 1944 covering 180 miles. Only the portion from Tallahassee, FL to Bainbridge, GA remains active.

The Apalachicola National Forest developed a portion of the right of way paralleling Springhill Road south of Tallahassee, paving a 2.4-mile section from Trout Pond GF&A Trailhead to the Helen Guard Station Road as a "Rail Trail ". The GF&A Trail is one of many former railroad rights of way nationwide that have been converted to recreational "Rail Trails." "Rail Trails" have been important in boosting recreation and small businesses in many communities.

US Army Camp Gordon Johnston near Carabelle, FL opened in 1942 as an important amphibious training location in preparation for the Normandy Invasion during World War II. The amphibious landing craft used to transport troops, mechanized equipment and supplies practiced assault landings on Dog Island and St. George Island along the Florida coast. Camp Johnston housed 10,000 soldiers and more than 24,000 were trained there. The GF&A Railroad transported the supplies, equipment, and personnel to support the facility from 1942 until 1944.

Among the first locomotives utilized by the GF&A were a pair of famous Baldwin "Russian" 2-10-0 Decapod steam locomotives. Locomotives #402 and #403 had been built for the Russian government during World War 1, however, the contracts were never finalized, and the locomotives remained in the US. The large size and power of the locomotives enabled the railroad to negotiate the rise in rail elevation more efficiently between the coastal community of Carrabelle and the Red Hills communities of Tallahassee and Bainbridge. Earlier, multiple smaller, less powerful locomotives had been required to haul the heavy loads north bound. Decapod Locomotive #402 was an important contributor to the effort and an old photograph of the locomotive is well known. Local photographer Michael Pace recently attached a replica of the locomotive upon the wall at the museum. A photograph of sister Decapod locomotive #403 has recently been discovered so maybe we'll be able to see that one of these days.



Scott Garner and I determined that we needed to honor the spirit of Sopchoppy and develop a pair of period-specific HO Scale trains that could be operated at Depot Day Festivals. We bought Bachmann Baldwin "Russian" Decapod steam locomotives and converted them from DC to DCC control with GF&A labels. Scott built periodic specific rail cars from kits with loads that highlighted the early logging, and agricultural era of the railroad. My train highlighted the WW II period with passenger cars, baggage cars, and flat cars bearing scratch-built landing craft and mechanized military equipment.

The BBMRA N and HO Divisions first ran trains at the Sopchoppy Depot Day Festival in 2019 but had not been able to run them during the intervening Covid period. We eagerly awaited the 2022 event, but it was washed out by

widespread flooding. After considerable continuous upgrading of the trains, we were very pleased to again participate in the 2023 event and having been well received by enthusiastic hosts and visitors, we look forward to operating in future "First Saturday in September" Depot Day Festivals.



Pensacola Railfest Rescheduled for May 18-19, 2024

From Sam Miller:

The annual Pensacola model railroad show scheduled for November 11-12 was cancelled and is being rescheduled for next spring as the new Pensacola Spring Railfest. The 2024 Railfest will be May 18-19, 2024. Beginning in 2025, this show will be held during the last weekend in April.

Louis Holiday and Terry Tucker of the Pensacola Model Railroad Club notified vendors a couple of weeks before the November show that a scheduling glitch had developed with the Escambia County Fairgrounds forcing the cancellation. Not only did the club lose the 2023 dates to one of the gun and knife shows, but also the mid-November weekend for the next 10 years. The club decided to switch their annual show to the spring.

“I am happy to announce the dates for the new Pensacola Spring Railfest will be May 18-19, 2024. Set up will occur on Friday, May 17,” Louis notified vendors late last month. “Initially we tried to reserve the Fairground venue for either the last weekend in April or the first weekend in May but the Department of Veterans Affairs is hosting an event running from the middle of April to the Middle of May. Being a military/veterans minded community we deferred.

“Additionally, scheduling our show later in April would have put us within a few weeks of the Mobile Model Train show. However, beginning 2025 our traditional show dates will be the last weekend in April.”

BBMRA President Andy Zimmerman, Vice President Stacey Elliott and Treasurer Neal Meadows had planned to set up 50 N Scale T-Trak modules as part of a larger T-Trak layout during the November show. Sam Miller, of BBMRA, had registered as a vendor and had decided to participate in the rescheduled show.

An Old Suitcase of Old Trains

Susan Hardy, who lives in eastern Leon County, called BBMRA President Andy Zimmerman earlier this month about giving the club an old suitcase of old – very old – HO trains. Sam Miller picked them up and will be turning them over to HO Coordinator Phil Weston.



The trains belonged to Susan’s late father-in-law, Dr. Frank Hardy, who lived in New York. They were brought down to Florida by Susan and her husband, Ed. Ed died about a year ago in Jacksonville and Susan wanted these old items donated in his memory.

“This is HO from the very early 50s, I think,” Sam says. It includes some of the oldest Roundhouse kits I have ever seen and some freight cars with loop couplers, of all things.”





Iconic Metcalfe, GA, Sawmill Closed

From Sam Miller:

The Metcalfe, GA, sawmill has shut down, at least for now. This decades old facility was popular among BBMRA members because of its active spur used to haul out saw dust and finished wood products; CSX most recently, I think.

Metcalfe is just over the Georgia line when traveling north from Miccosukee, FL. The area includes popular trail bike riding routes and quaint Mary's Kitchen restaurant.

Vernon Parramore, one of the earliest HO super modelers in our club, would take me there when we were returning from the annual Albany show, then located on the banks of the Flint River. Vernon and Harold Odom based sections of their detailed HO layouts on the sawmill.

One Metcalfe resident says the plant was shut down after the closing of the paper mill in Perry, FL., which had been a major customer. They also say there is a possibility some entity will purchase the sawmill from Hood Industries and reopen it. Hood Industries, itself, has left the door open to a re-opening, according to the Thomasville Times-Enterprise.

Let's hope so.

Here is a report from the September 14, 2023, Thomasville Times-Enterprise

METCALFE- Hood Industries' company president, Jay Galloway, announced Wednesday afternoon news of the plant's closure in Metcalfe, effectively laying off approximately 100 employees. At a facility-wide



meeting called by Hood leadership this week, reasons cited for the closure were the current volatile economy and its impact on the lumber market along with raw material and labor challenges.



“We have looked at this problem from every conceivable angle, carefully studied the numbers, and considered many factors,” Galloway told employees. “We have made the difficult decision to close the mill.”

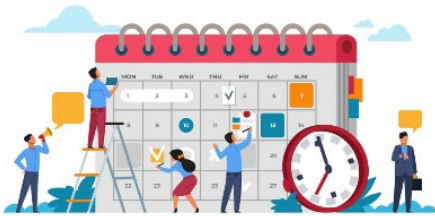
Over the next few days, Hood officials will privately meet with employees individually to discuss the transition and share information about employment opportunities at other Hood locations in Mississippi and Louisiana.

“This was not an easy decision for any of us to make. We are well-aware of the impact this decision will have on the Metcalfe employees, their families and community,” Galloway said.

Galloway said that operations will officially cease after the remaining product has been processed, which will likely be by the end of the month.

Hood Industries plans to reevaluate the viability of the Metcalfe operation in the future, but until that time, the facility will remain closed.

BBMRA Important Events in 2023!!



Help us build this calendar. Email sammiller61113@outlook.com. Please confirm that an activity is still on before you travel to it. We are listing Internet links whenever possible.

Here is a terrific national calendar:
https://www.railserv.com/events/train_shows.html

BBMRA meetings are the third Tuesday of each month. We currently meet through Zoom but meeting again face-to-face is being discussed.

BBMRA Zoom: Go to Zoom Program or Internet site and use these codes.

Meeting ID: 873 5905 5848, Password: BBMRA2022

Lionel Interest Group Operating Sessions: most Sundays at 1:30 p.m. at Sam Miller’s house in Woodgate. Call (850) 459-3012 for further information.

December 9, 2023, Woodgate Neighborhood Model Trains Open House: a Saturday, 1:30 to 3:30 p.m., at Sam Miller’s house in Woodgate. The BBMRA Sunday Group will operate Sam’s garage Lionel layout, decorated for the holidays, along with other smaller layouts. This is for the Woodgate Neighborhood, but BBMRA members are invited to come by.

December 14, 2023, a Thursday, BBMRA running again at the Tallahassee Senior Center. It will be the third December in a row for this holiday-related operating session. O Gauge, HO and N Scale layouts are planned. Hours are 6:30 to 8 p.m., with setup beginning at 5 p.m. We had a great turnout last year.

December 2023, Veterans Memorial Railroad Polar Express: VMRR Polar Express: Operating sessions for the Polar Express are scheduled for 7 p.m. to 10 p.m., Eastern, on 14 nights in December. Many trips will be pulled by the Crown, a wonderful steamer. The dates are December 1,2,8,9,10,14,15,16,17,19,20,21,22,27!!!

The rides are about 25 minutes long around Veterans Memorial Park to and from the Tom Keenan Station. For additional information, go to the Internet site or call: (850) 643-6646.

If the night you want is sold out of Reservation Tickets come on anyway! We have General Admission every evening when the train is running. Just walk up and buy a ticket. Tickets are \$15 for adults and \$10 for kids 12 and under. Children two and under ride free. The address is 10561 NW Theo Jacobs Way, Bristol, FL 32321

Click here to order tickets: <https://www.veteransmemorialrailroad.org>

January 4-6, 2024: Prototype Rails 2024, Cocoa Beach Hilton: This is an NMRA Sunshine Region sanctioned event with a wide variety of model railroading workshops and presentations. Featuring O, HO and N. The registration fee is \$55 before December 31 and \$60 after that. Checks payable to Prototype Rails and must be sent to Tom Meyer, 2321 Kumquat Drive, Edgewater, FL, 32141. Mention Group Code NMR 23 when reserving your room.

<https://www.hilton.com/en/hotels/ccbchhf-hilton-cocoa-beach-oceanfront/>

January 13-14, 2024, 83rd Florida Model Train Show & Sale, Deland: 9a to 4p Saturday, 10a to 3:30p, Sunday. Tommy Lawrence & Townsend Buildings, Volusia County Fairgrounds. Admission, \$10; children under 12, free. Golden Spike Enterprises Deland Train Show. Sam Miller is a vendor.

February 4-5, 2024, The Villages Model Train Show: Savannah Regional Center, 1545 N. Buena Vista Blvd., The Villages, FL, 32162. Saturday, 9 a.m. to 4 p.m.; Sunday, 10 am. To 3 p.m. Admission \$7; children under 12 free. Sam is a vendor.

February 10, 2024, 45th Annual Jacksonville Train Show & Sale: 9a to 4p, Admission, \$13; children under 12, free. Prime Osborne Center, 1000 Waters Street, Jacksonville, 32204. Golden Spike Enterprises. Sam is a vendor.

March, 2024, Woodville Founder's Day, Woodville, FL. Exact date to be announced later. BBMRA set-ups.

May 18-19, 2024, Pensacola Spring Railfest 2023. Sponsored by the Pensacola Model Railroad Club. Building 1, the Pensacola Fairgrounds, 6655 Mobile Highway, Pensacola, 32526. Saturday, 9 to 5; Sunday, 10 to 4 (Central times). BBMRA usually sets up modules as part of this show's N Scale T-Trak layout.



Signals from the Sunshine Region



Keep on the lookout for Northern Division Virtual Clinics: Now that the very successful SSR Regional convention is in the rear-view mirror we are lining up our next set of quarterly Northern Division Clinics, which will include DCC, Model railroad manufacturers, and MMRs from across the US and Canada, and providing quality Clinics. If you are in the Northern Division, look at your e-mail for Links. If not, send your e-mail to photobob321@gmail.com, and we will get you added to the distribution list so you will get notified as we schedule them. If there is a specific area you would like us to focus on, please email me!!

OUT OF THE PAST – GALLOPING GEESE AND OTHER ODD BIRDS

By: Neal Meadows, Ed.D.

A Bit of History

Let's roll back the calendar to the early 1930s. The Rio Grande Southern was about to go under unless management could cut costs drastically. Necessity, or in this case desperation, can indeed be the mother of invention. The RGS shops came up with these unique contraptions that could haul passengers and freight. Each gasoline-powered motor car, operated by one person, replaced a full crew and a steam-powered mixed train giving the RGS huge savings on operating expenses while maintaining minimal service.



Goose no. 5 was built in the Rio Grande Southern shops in 1933. It was originally made from Pierce-Arrow automobile parts and looked quite different. Then in 1946 the Pierce-Arrow body was replaced with a Wayne bus body and was re-engined. This Cor-Cor model represents the prototype's appearance from 1946 to 1950. Motors 3, 4, and 5 all went through the same rebuilding program, so you could have all three Geese running on a Rio Grande Southern layout and be prototypically correct. In 1950 the freight car was converted for use in excursion passenger service. Large windows were cut in the sides and seats, heating, and a toilet were added inside. Prototype no. 5 can be seen today in Delores, Colo.



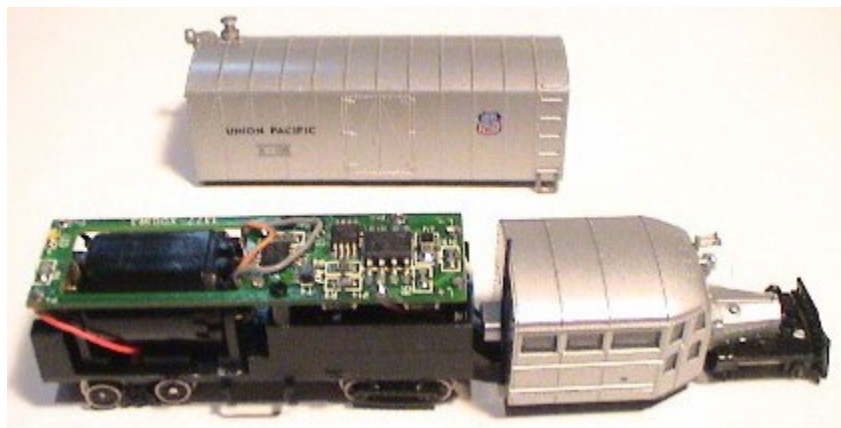
It has been restored and occasionally operates on the Cumbres & Toltec Scenic RR and the Durango & Silverton narrow gauge tourist railroads. The origins of the "Galloping Goose" nickname are obscure, but narrow-gauge fans like to think it's because of the way these motor cars waddled along on the rough narrow-gauge track.

In 2005 Con-Cor announced it was working on the development of the Galloping Goose in N-Scale. I was intrigued by the vehicle. I had never seen anything like that and wanted to make sure I could get one. They were originally produced in the following decorated schemes and were to be used only on DC powered layouts. In 2007 a DCC version was

released, and I was able to obtain the Rio Grande Southern #5 for \$239.00. It is a very tiny unit, small wheels, tiny details, and tiny trucks but it works really well if you keep the wheels and wipers clean. The Rio Grande Southern version was the only prototypically correct unit. The others were all Con-Cor's fantasy line of Galloping Geese. Today on EBAY these same units in DC are selling for about \$400.00 and no DCC.

Here is a YouTube showing the Goose in a sound version.

<https://www.youtube.com/watch?app=desktop&v=xDbGHhFLHiU>



There are two different versions of this mechanism. The initial release was not DCC-Ready (zero provision for a decoder). A version with factory-installed dual-mode decoder was subsequently released in June of 2007. However, since there really isn't room for an NMRA-style socket (Con-Cor's normal approach to DCC), it is a hard-wired install.

The box trailer chassis is all metal. The motor is a closed-sided 3-poler. A small flywheel is attached to the rear driveshaft. All eight box trailer wheels provide pickup (no traction tires). The cab wheels are electrically neutral. Current is routed from the trucks to the decoder / PCB via wires. Propulsion is provided solely by the two axles on the forward box trailer truck. All gearing is metal (as opposed to plastic), which I have to assume was simply an attempt to add more weight. There are no couplers. The cab is mounted to the trailer on a swivel, allowing it to pivot around curves. There are a couple of wires running from the trailer to the cab to light the three *tiny* green lights on the cab (there is also a back-up light on the trailer). Wheels are low-profile, so no problems on Code-55 rails. A snowplow-equipped pilot is included in the box should you wish to go that route.



Pierce Arrow Freight Galloping Goose Railcar - Standard Gauge – DCC on board -- Rio Grande Southern #5 with snowplow installed.

The fantasy line of Geese!



Denver & Rio Grande Western X105 Walthers Part#223-4172 \$179.98



Pierce Arrow Freight Galloping Goose Railcar - Standard Gauge - Standard DC -- Santa Fe X105 MofW



Pierce Arrow Freight Galloping Goose Railcar - Standard Gauge - Standard DC -- Pennsylvania



Pierce Arrow Freight Galloping Goose Railcar - Standard Gauge - Standard DC -- Great Northern



Con-Cor Part # 223-4176
Pierce Arrow Freight Galloping Goose Railcar - Standard Gauge - Standard DC -- Union Pacific



Con-Cor Part # 223-4177
Pierce Arrow Freight Galloping Goose Railcar - Standard Gauge - Standard DC -- Southern Pacific DC version \$179.98



[Con-Cor](#) Part # 223-4178
 Pierce Arrow Freight Galloping Goose Railcar - Standard Gauge - Standard DC -- New York Central



[Con-Cor](#) Part # 223-4179
 Pierce Arrow Freight Galloping Goose Railcar - Standard Gauge - Standard DC -- Maintenance Of Way

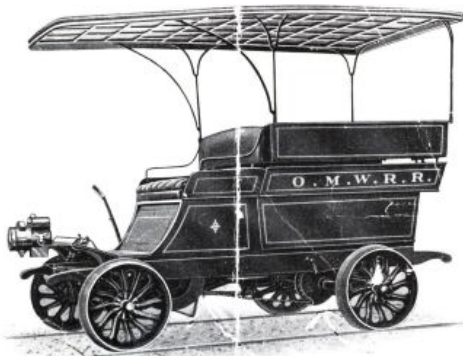
While working on this article I came across various other versions or “Odd Birds” used for transportation. Some are called railbuses, some called inspection cars, and others are just called contraptions. But they were all used to get the task done while keeping the costs low.





Catalog No. 116

Oldsmobile Railroad Inspection Car



MODEL No. 2-TONNEAU CAR

SOLD ONLY BY

Railway Appliances Company

CHICAGO NEW YORK

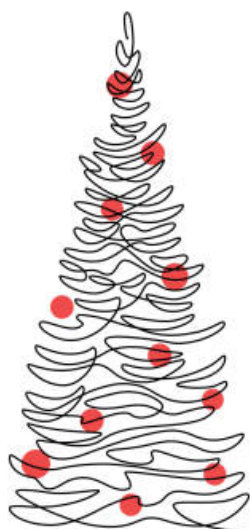




Goose 5 and Goose 2 at the Colorado Railroad Museum

I especially like the Red 1958 Pontiac Station Wagon!

Some items in this article were excerpted from Wikipedia, Spookshow, Walthers, and Trainboard.



Enhancing the Thomas Christmas Layout

From Randy Lombardo:

Recently I purchased on eBay two items that Lionel no longer produces:

1. Troublesome Trucks with Christmas presents cataloged 2011-2015. I balked at purchasing this item when it first came out because I thought the presents were cheap foil stuck on with no form. My decision was based on a vague description of the presents in the Lionel Catalogs not showing the actual presents were removable and the foil was wrapped around a Styrofoam base. Glad I reconsidered.



2. Merry Christmas Red Girder Bridge cataloged only in 2009. Unlike, the Christmas FasTrack Girder Bridge, this accessory doesn't have a built-in track, which would require removal of one lighted straight track section in order to connect to the layout. It fits right over the existing straight track sections and removal is just as quick.



Regrettably, it will replace the Black Short Extension Bridge with added Christmas mini lights.

Looking forward to debuting these items on December 14th show at The Tallahassee Senior Center!

Randy Lombardo, Chief, Thomas Sub-Division

Minutes from the October 17, 2023, Meeting of BBMRA

Submitted by: Sheldon Harrison, BBMRA Secretary

President Andy called the meeting held on Oct 17, 2023, via Zoom to order at 7:37 pm. There were 13 participants present at maximum.

New Member David McDonald – O-Scale new member. Sam introduced him to the club. He had a fire but with Sam's help, he is slowly getting some of his equipment repaired. He likes doing nostalgic buildings and other items.

Minutes – The minutes of the September meeting were forwarded by Stacey and seconded by Neal. It was accepted without discussion or objection.

Treasurer's Report – President Andy shared the report using Zoom meeting functionality. Treasurer Neal proceeded to describe the report contents. The conclusion is that we are doing well and in the black. As standard practice, the report is not shared in the Lantern but will be shared with club members upon request. Ed forwarded a motion to accept, and it was seconded by Phil. The motion to accept the report as presented was passed without objection.

Division Reports

Small Scale – Stacey mentioned that there was a get together last month to fix the canopy leak in the trailer and it was a good outing. He also mentioned that about 50 N-Scale modules will be headed to Pensacola next month. President Andy then asked about the Albany show and it became apparent that the Albany being referred to was the Albany 1,000+ miles to the northeast in the Empire State.

Large Scale – Sam mentioned that Dec 9th will be a run of his layouts in the post COVID era. It is not his traditional get together, but it does give club members the opportunity to meet and run trains throughout the season. His family members including granddaughter will participate in the activities.

HO Scale – Phil mentioned there was not much to report but looking forward to the Senior Center run on December 13. Neal then added that there is interest in bringing an additional layout to the setup as the space is there.

RA Gray Building Discussion – It appears that it is back open. Club members committed to checking on whether it will be available for Children's Day.

NMRA – Bob F was initially absent and consequently President Andy mentioned the Sunshine Region event last month. He mentioned that the organization is growing. He then added that there has been turnover in board leadership that has now been resolved. He then went on to describe the details, upcoming NMRA activities and meetings strategically placed to allow maximum participation. He highlighted the award received by Bob F's for meritorious service to the NMRA. President Andy pivoted to mentioning various upcoming shows including the Pensacola show in November, Atlanta in early December, and the Woodville Founders Day event next Spring. Bob F mentioned he has a lot of pictures that he needs to coordinate with Sam and Neal re getting into the Lantern and he appreciates the nomination for the award.

Good of the Group

Andy Millott mentioned the BBMRA layout tour in the Spring and emphasized the need to ensure there is no conflict with Woodville Founders Day. The Shade Tobacco Music Festival in Havana was also discussed. Joe then chimed in on the state of model railroading and astronomy in general, lamenting the diminished interest in the youngsters as they mature into adulthood.

The meeting was concluded at 9:21 PM.

HERE ARE A FEW "RAILROAD STAMPS FOR YOUR VIEWING PLEASURE!"



"The LANTERN" is the official publication of the BIG BEND MODEL RAILROAD ASSOCIATION, INC. and is published monthly just prior to each regularly scheduled meeting. Subscriptions are included in all members' dues. The deadline to submit materials for publication is the first day of each month sent in c/o Secretary/Editor. P.O. Box 3392, Tallahassee, FL 32315-3392. Items may also be forwarded to the Editors via email attachment: (Neal Meadows) meadowns1956@comcast.net or (Sam Miller) samthetrainmanmiller@gmail.com .